



[Go to Product page](#)

Datasheet for ABIN1537295  
**anti-JRKL antibody (C-Term)**

1 Image

Overview

|                      |                                     |
|----------------------|-------------------------------------|
| Quantity:            | 400 µL                              |
| Target:              | JRKL                                |
| Binding Specificity: | AA 412-439, C-Term                  |
| Reactivity:          | Human                               |
| Host:                | Rabbit                              |
| Clonality:           | Polyclonal                          |
| Conjugate:           | This JRKL antibody is un-conjugated |
| Application:         | Western Blotting (WB)               |

Product Details

|               |  |
|---------------|--|
| Immunogen:    | This JRKL antibody is generated from rabbits immunized with a KLH conjugated synthetic peptide between 412-439 amino acids from the C-terminal region of human JRKL. |
| Clone:        | RB38275  |
| Isotype:      | Ig Fraction  |
| Purification: | This antibody is purified through a protein A column, followed by peptide affinity purification.   |

Target Details

|                   |   |
|-------------------|---|
| Target:           | JRKL  |
| Alternative Name: | JRKL ( <a href="#">JRKL Products</a> )  |
| Background:       | The function of this gene has not yet been defined, however, the encoded protein shares |

## Target Details

---

similarity with the human (41 % identical) and mouse (34 % identical) jerky gene products. This protein may act as a nuclear regulatory protein. [provided by RefSeq].

Molecular Weight: 59912

Gene ID: 8690

NCBI Accession: [NP\\_001248762](#), [NP\\_003763](#)

UniProt: [Q9Y4A0](#)

## Application Details

---

Application Notes: WB: 1:1000

Restrictions: For Research Use only

## Handling

---

Format: Liquid

Buffer: Purified polyclonal antibody supplied in PBS with 0.09 % (W/V) sodium azide.

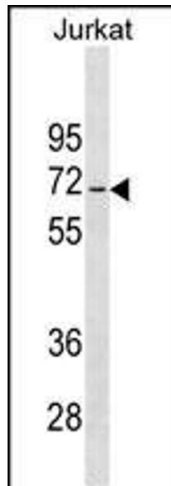
Preservative: Sodium azide

Precaution of Use: This product contains Sodium azide: a POISONOUS AND HAZARDOUS SUBSTANCE which should be handled by trained staff only.

Storage: 4 °C, -20 °C

Storage Comment: JRKL Antibody (C-term) can be refrigerated at 2-8 °C for up to 6 months. For long term storage, keep at -20 °C.

Expiry Date: 6 months



### Western Blotting

**Image 1.** JRKL Antibody (C-term) (ABIN1537295 and ABIN2849486) western blot analysis in Jurkat cell line lysates (35 µg/lane). This demonstrates the JRKL antibody detected the JRKL protein (arrow).