



[Go to Product page](#)

Datasheet for ABIN1537301

anti-KHDRBS1 antibody (C-Term)

1 Image

1 Publication

Overview

Quantity:	400 µL
Target:	KHDRBS1
Binding Specificity:	AA 414-443, C-Term
Reactivity:	Mouse
Host:	Rabbit
Clonality:	Polyclonal
Conjugate:	This KHDRBS1 antibody is un-conjugated
Application:	Western Blotting (WB)

Product Details

Immunogen:	This Mouse Khdrbs1 antibody is generated from rabbits immunized with a KLH conjugated synthetic peptide between 414-443 amino acids from the C-terminal region of mouse Khdrbs1.
Clone:	RB40286
Isotype:	Ig Fraction
Predicted Reactivity:	C, H, Rat
Purification:	This antibody is purified through a protein A column, followed by peptide affinity purification.

Target Details

Target:	KHDRBS1
Alternative Name:	Khdrbs1 (KHDRBS1 Products)

Target Details

Background:	Recruited and tyrosine phosphorylated by several receptor systems, for example the T-cell, leptin and insulin receptors. Once phosphorylated, functions as an adapter protein in signal transduction cascades by binding to SH2 and SH3 domain-containing proteins. Role in G2-M progression in the cell cycle. Represses CBP-dependent transcriptional activation apparently by competing with other nuclear factors for binding to CBP. Also acts as a putative regulator of mRNA stability and/or translation rates and mediates mRNA nuclear export.
Molecular Weight:	48371
Gene ID:	20218
NCBI Accession:	NP_035447
UniProt:	Q60749
Pathways:	NF-kappaB Signaling , Neurotrophin Signaling Pathway , Autophagy

Application Details

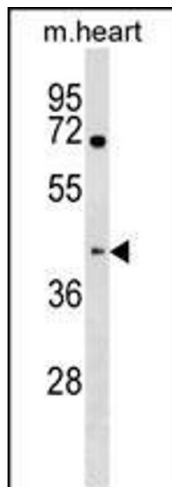
Application Notes:	WB: 1:1000
Restrictions:	For Research Use only

Handling

Format:	Liquid
Buffer:	Purified polyclonal antibody supplied in PBS with 0.09 % (W/V) sodium azide.
Preservative:	Sodium azide
Precaution of Use:	This product contains Sodium azide: a POISONOUS AND HAZARDOUS SUBSTANCE which should be handled by trained staff only.
Storage:	4 °C,-20 °C
Storage Comment:	Mouse Khdrbs1 Antibody (C-term) can be refrigerated at 2-8 °C for up to 6 months. For long term storage, keep at -20 °C.
Expiry Date:	6 months

Publications

Product cited in:	Zhang, Yu, Li, Jiang, Zhou: "Utility of SAM68 in the progression and prognosis for bladder cancer." in: BMC cancer , Vol. 15, pp. 364, (2015) (PubMed).
-------------------	--



Western Blotting

Image 1. Mouse Khdrbs1 Antibody (C-term) (ABIN1537301 and ABIN2838340) western blot analysis in mouse heart tissue lysates (35 µg/lane). This demonstrates the Khdrbs1 antibody detected the Khdrbs1 protein (arrow).