



[Go to Product page](#)

Datasheet for ABIN1537315
anti-PRAMEF1 antibody (C-Term)

1 Image

Overview

Quantity:	400 µL
Target:	PRAMEF1
Binding Specificity:	AA 427-454, C-Term
Reactivity:	Human
Host:	Rabbit
Clonality:	Polyclonal
Conjugate:	This PRAMEF1 antibody is un-conjugated
Application:	Western Blotting (WB)

Product Details

Immunogen:	This PRAMEF1 antibody is generated from rabbits immunized with a KLH conjugated synthetic peptide between 427-454 amino acids from the C-terminal region of human PRAMEF1.
Clone:	RB39631
Isotype:	Ig Fraction
Purification:	This antibody is purified through a protein A column, followed by peptide affinity purification.

Target Details

Target:	PRAMEF1
Alternative Name:	PRAMEF1 (PRAMEF1 Products)
Background:	The function of this protein remains unknown.

Target Details

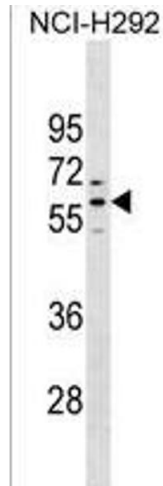
Molecular Weight:	55149
Gene ID:	65121
NCBI Accession:	NP_075389
UniProt:	O95521
Pathways:	Retinoic Acid Receptor Signaling Pathway

Application Details

Application Notes:	WB: 1:1000
Restrictions:	For Research Use only

Handling

Format:	Liquid
Buffer:	Purified polyclonal antibody supplied in PBS with 0.09 % (W/V) sodium azide.
Preservative:	Sodium azide
Precaution of Use:	This product contains Sodium azide: a POISONOUS AND HAZARDOUS SUBSTANCE which should be handled by trained staff only.
Storage:	4 °C,-20 °C
Storage Comment:	PRAMEF1 Antibody (C-term) can be refrigerated at 2-8 °C for up to 6 months. For long term storage, keep at -20 °C.
Expiry Date:	6 months



Western Blotting

Image 1. PREF1 Antibody (C-term) (ABIN1537315 and ABIN2850282) western blot analysis in NCI- cell line lysates (35 µg/lane). This demonstrates the PREF1 antibody detected the PREF1 protein (arrow).