

Datasheet for ABIN1537325
anti-NAP1L3 antibody (C-Term)[Go to Product page](#)

1 Image

Overview

Quantity:	400 µL
Target:	NAP1L3
Binding Specificity:	AA 432-459, C-Term
Reactivity:	Human
Host:	Rabbit
Clonality:	Polyclonal
Conjugate:	This NAP1L3 antibody is un-conjugated
Application:	Western Blotting (WB)

Product Details

Immunogen:	This NAP1L3 antibody is generated from rabbits immunized with a KLH conjugated synthetic peptide between 432-459 amino acids from the C-terminal region of human NAP1L3.
Clone:	RB37499
Isotype:	Ig Fraction
Purification:	This antibody is purified through a protein A column, followed by peptide affinity purification.

Target Details

Target:	NAP1L3
Alternative Name:	NAP1L3 (NAP1L3 Products)
Background:	This gene encodes a member of the nucleosome assembly protein (NAP) family. It is linked

Target Details

closely to a region of genes responsible for several X-linked mental retardation syndromes. Alternatively spliced transcript variants have been found for this gene, but the biological validity of the variants has not been determined.

Molecular Weight: 57593

Gene ID: 4675

NCBI Accession: [NP_004529](#)

UniProt: [Q99457](#)

Application Details

Application Notes: WB: 1:1000

Restrictions: For Research Use only

Handling

Format: Liquid

Buffer: Purified polyclonal antibody supplied in PBS with 0.09 % (W/V) sodium azide.

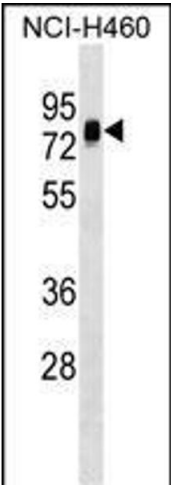
Preservative: Sodium azide

Precaution of Use: This product contains Sodium azide: a POISONOUS AND HAZARDOUS SUBSTANCE which should be handled by trained staff only.

Storage: 4 °C, -20 °C

Storage Comment: NAP1L3 Antibody (C-term) can be refrigerated at 2-8 °C for up to 6 months. For long term storage, keep at -20 °C.

Expiry Date: 6 months



Western Blotting

Image 1. NL3 Antibody (C-term) 7474b western blot analysis in NCI- cell line lysates (35 µg/lane). This demonstrates the NL3 antibody detected the NL3 protein (arrow).