

Datasheet for ABIN1537329
anti-ZSWIM2 antibody (C-Term)



[Go to Product page](#)

1 Image

Overview

Quantity:	400 µL
Target:	ZSWIM2
Binding Specificity:	AA 435-462, C-Term
Reactivity:	Human
Host:	Rabbit
Clonality:	Polyclonal
Conjugate:	This ZSWIM2 antibody is un-conjugated
Application:	Western Blotting (WB)

Product Details

Immunogen:	This ZSWIM2 antibody is generated from rabbits immunized with a KLH conjugated synthetic peptide between 435-462 amino acids from the C-terminal region of human ZSWIM2.
Clone:	RB38135
Isotype:	Ig Fraction
Purification:	This antibody is purified through a protein A column, followed by peptide affinity purification.

Target Details

Target:	ZSWIM2
Alternative Name:	ZSWIM2 (ZSWIM2 Products)
Background:	E3 ubiquitin-protein ligase involved in the regulation of Fas-, DR3-and DR4-mediated apoptosis.

Target Details

Functions in conjunction with the UBE2D1, UBE2D3 and UBE2E1 E2 ubiquitin-conjugating enzymes (By similarity).

Molecular Weight: 72732

Gene ID: 151112

NCBI Accession: [NP_872327](#)

UniProt: [Q8NEG5](#)

Application Details

Application Notes: WB: 1:1000

Restrictions: For Research Use only

Handling

Format: Liquid

Buffer: Purified polyclonal antibody supplied in PBS with 0.09 % (W/V) sodium azide.

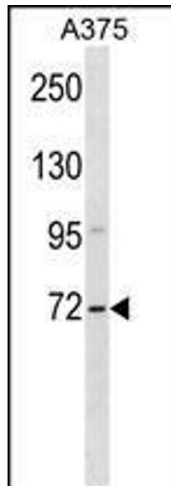
Preservative: Sodium azide

Precaution of Use: This product contains Sodium azide: a POISONOUS AND HAZARDOUS SUBSTANCE which should be handled by trained staff only.

Storage: 4 °C,-20 °C

Storage Comment: ZSWIM2 Antibody (C-term) can be refrigerated at 2-8 °C for up to 6 months. For long term storage, keep at -20 °C.

Expiry Date: 6 months



Western Blotting

Image 1. ZSWIM2 Antibody (C-term) (ABIN1537329 and ABIN2849971) western blot analysis in cell line lysates (35 µg/lane). This demonstrates the ZSWIM2 antibody detected the ZSWIM2 protein (arrow).