



[Go to Product page](#)

Datasheet for ABIN1537333
anti-EEPD1 antibody (C-Term)

1 Image

Overview

Quantity:	400 µL
Target:	EEPD1
Binding Specificity:	AA 438-467, C-Term
Reactivity:	Human
Host:	Rabbit
Clonality:	Polyclonal
Conjugate:	This EEPD1 antibody is un-conjugated
Application:	Western Blotting (WB)

Product Details

Immunogen:	This EEPD1 antibody is generated from rabbits immunized with a KLH conjugated synthetic peptide between 438-467 amino acids from the C-terminal region of human EEPD1.
Clone:	RB26149
Isotype:	Ig Fraction
Purification:	This antibody is purified through a protein A column, followed by peptide affinity purification.

Target Details

Target:	EEPD1
Alternative Name:	EEPD1 (EEPD1 Products)
Background:	EEPD1 contains 1 HhH domain.

Target Details

Molecular Weight:	62403
Gene ID:	80820
NCBI Accession:	NP_085139
UniProt:	Q7L9B9

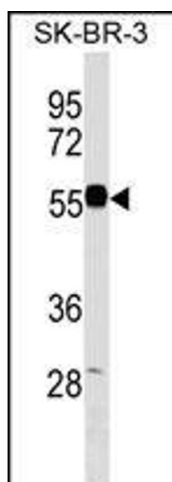
Application Details

Application Notes:	WB: 1:1000
Restrictions:	For Research Use only

Handling

Format:	Liquid
Buffer:	Purified polyclonal antibody supplied in PBS with 0.09 % (W/V) sodium azide.
Preservative:	Sodium azide
Precaution of Use:	This product contains Sodium azide: a POISONOUS AND HAZARDOUS SUBSTANCE which should be handled by trained staff only.
Storage:	4 °C, -20 °C
Storage Comment:	EEPD1 Antibody (C-term) can be refrigerated at 2-8 °C for up to 6 months. For long term storage, keep at -20 °C.
Expiry Date:	6 months

Images



Western Blotting

Image 1. EEPD1 Antibody (C-term) (ABIN1537333 and ABIN2849670) western blot analysis in SK-BR-3 cell line lysates (35 µg/lane). This demonstrates the EEPD1 antibody detected the EEPD1 protein (arrow).