

Datasheet for ABIN1537343
anti-RBMY1D antibody (C-Term)[Go to Product page](#)

1 Image

Overview

| | |
|----------------------|---------------------------------------|
| Quantity: | 400 µL |
| Target: | RBMY1D |
| Binding Specificity: | AA 444-470, C-Term |
| Reactivity: | Human |
| Host: | Rabbit |
| Clonality: | Polyclonal |
| Conjugate: | This RBMY1D antibody is un-conjugated |
| Application: | Western Blotting (WB) |

Product Details

| | |
|---------------|--|
| Immunogen: | This RBMY1D antibody is generated from rabbits immunized with a KLH conjugated synthetic peptide between 444-470 amino acids from the C-terminal region of human RBMY1D. |
| Clone: | RB39653 |
| Isotype: | Ig Fraction |
| Purification: | This antibody is purified through a protein A column, followed by peptide affinity purification. |

Target Details

| | |
|-------------------|---|
| Target: | RBMY1D |
| Alternative Name: | RBMY1D (RBMY1D Products) |
| Background: | This gene encodes a protein containing an RNA-binding motif in the N-terminus and four SRGY |

Target Details

(serine, arginine, glycine, tyrosine) boxes in the C-terminus. Multiple copies of this gene are found in the AZFb azoospermia factor region of chromosome Y and the encoded protein is thought to be involved in spermatogenesis. Most copies of this locus are pseudogenes, although six highly similar copies have full-length ORFs and are considered functional. Four functional copies of this gene are found within inverted repeat IR2, two functional copies of this gene are found in palindrome P3, along with two copies of PTPN13-like, Y-linked. [provided by RefSeq].

Molecular Weight: 55775

Gene ID: 378949

NCBI Accession: [NP_001006120](#)

UniProt: [P0C7P1](#)

Application Details

Application Notes: WB: 1:1000

Restrictions: For Research Use only

Handling

Format: Liquid

Buffer: Purified polyclonal antibody supplied in PBS with 0.09 % (W/V) sodium azide.

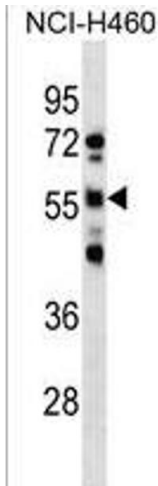
Preservative: Sodium azide

Precaution of Use: This product contains Sodium azide: a POISONOUS AND HAZARDOUS SUBSTANCE which should be handled by trained staff only.

Storage: 4 °C, -20 °C

Storage Comment: RBMY1D Antibody (C-term) can be refrigerated at 2-8 °C for up to 6 months. For long term storage, keep at -20 °C.

Expiry Date: 6 months



Western Blotting

Image 1. RBMY1D Antibody (C-term) (ABIN1537343 and ABIN2850417) western blot analysis in NCI- cell line lysates (35 µg/lane). This demonstrates the RBMY1D antibody detected the RBMY1D protein (arrow).