



[Go to Product page](#)

Datasheet for ABIN1537345
anti-PRAMEF16 antibody (C-Term)

1 Image

Overview

Quantity:	400 µL
Target:	PRAMEF16
Binding Specificity:	AA 446-472, C-Term
Reactivity:	Human
Host:	Rabbit
Clonality:	Polyclonal
Conjugate:	This PRAMEF16 antibody is un-conjugated
Application:	Western Blotting (WB)

Product Details

Immunogen:	This PRAMEF16 antibody is generated from rabbits immunized with a KLH conjugated synthetic peptide between 446-472 amino acids from the C-terminal region of human PRAMEF16.
Clone:	RB39634
Isotype:	Ig Fraction
Purification:	This antibody is purified through a protein A column, followed by peptide affinity purification.

Target Details

Target:	PRAMEF16
Alternative Name:	PRAMEF16 (PRAMEF16 Products)

Target Details

Background: The function of this protein remains unknown.

Gene ID: 654348

NCBI Accession: [NP_001038945](#)

UniProt: [Q5VWM1](#)

Application Details

Application Notes: WB: 1:1000

Restrictions: For Research Use only

Handling

Format: Liquid

Buffer: Purified polyclonal antibody supplied in PBS with 0.09 % (W/V) sodium azide.

Preservative: Sodium azide

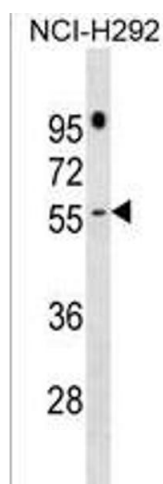
Precaution of Use: This product contains Sodium azide: a POISONOUS AND HAZARDOUS SUBSTANCE which should be handled by trained staff only.

Storage: 4 °C, -20 °C

Storage Comment: PRAMEF16 Antibody (C-term) can be refrigerated at 2-8 °C for up to 6 months. For long term storage, keep at -20 °C.

Expiry Date: 6 months

Images



Western Blotting

Image 1. PREF16 Antibody (C-term) (ABIN1537345 and ABIN2850284) western blot analysis in NCI- cell line lysates (35 µg/lane). This demonstrates the PREF16 antibody detected the PREF16 protein (arrow).