

Datasheet for ABIN1537347  
**anti-PLA2G3 antibody (C-Term)**[Go to Product page](#)

## 1 Image

## Overview

Quantity:	400 µL
Target:	PLA2G3
Binding Specificity:	AA 446-474, C-Term
Reactivity:	Human
Host:	Rabbit
Clonality:	Polyclonal
Conjugate:	This PLA2G3 antibody is un-conjugated
Application:	Western Blotting (WB)

## Product Details

Immunogen:	This PLA2G3 antibody is generated from rabbits immunized with a KLH conjugated synthetic peptide between 446-474 amino acids from the C-terminal region of human PLA2G3.
Clone:	RB39620
Isotype:	Ig Fraction
Purification:	This antibody is purified through a protein A column, followed by peptide affinity purification.

## Target Details

Target:	PLA2G3
Alternative Name:	PLA2G3 ( <a href="#">PLA2G3 Products</a> )
Background:	PLA2G3 belongs to the family of secreted phospholipase A2 (sPLA2, EC 3.1.1.4) proteins.



## Target Details

	These Ca(2+)-dependent lipolytic enzymes have a conserved Ca(2+)-binding loop and a his-aspartate dyad in the catalytic site (Murakami et al., 2003 [PubMed 12522102]).
Molecular Weight:	57167
Gene ID:	50487
NCBI Accession:	<a href="#">NP_056530</a>
UniProt:	<a href="#">Q9NZ20</a>

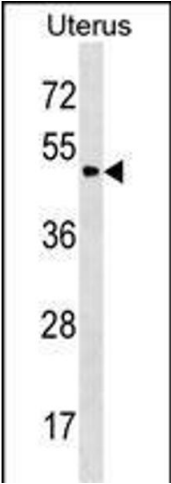
## Application Details

Application Notes:	WB: 1:1000
Restrictions:	For Research Use only

## Handling

Format:	Liquid
Buffer:	Purified polyclonal antibody supplied in PBS with 0.09 % (W/V) sodium azide.
Preservative:	Sodium azide
Precaution of Use:	This product contains Sodium azide: a POISONOUS AND HAZARDOUS SUBSTANCE which should be handled by trained staff only.
Storage:	4 °C,-20 °C
Storage Comment:	PLA2G3 Antibody (C-term) can be refrigerated at 2-8 °C for up to 6 months. For long term storage, keep at -20 °C.
Expiry Date:	6 months





Western Blotting

**Image 1.** PLA2G3 Antibody (C-term) (ABIN1537347 and ABIN2850277) western blot analysis in Uterus tissue lysates (35 µg/lane). This demonstrates the PLA2G3 antibody detected the PLA2G3 protein (arrow).