



[Go to Product page](#)

Datasheet for ABIN1537349
anti-ENAH antibody (C-Term)

1 Image

Overview

Quantity:	400 µL
Target:	ENAH
Binding Specificity:	AA 446-475, C-Term
Reactivity:	Human
Host:	Rabbit
Clonality:	Polyclonal
Conjugate:	This ENAH antibody is un-conjugated
Application:	Western Blotting (WB)

Product Details

Immunogen:	This ENAH antibody is generated from rabbits immunized with a KLH conjugated synthetic peptide between 446-475 amino acids from the C-terminal region of human ENAH.
Clone:	RB30620
Isotype:	Ig Fraction
Purification:	This antibody is purified through a protein A column, followed by peptide affinity purification.

Target Details

Target:	ENAH
Alternative Name:	ENAH (ENAH Products)
Background:	Ena/VASP proteins are actin-associated proteins involved in a range of processes dependent

Target Details

on cytoskeleton remodeling and cell polarity such as axon guidance and lamellipodial and filopodial dynamics in migrating cells. ENAH induces the formation of F-actin rich outgrowths in fibroblasts. Acts synergistically with BAIAP2-alpha and downstream of NTN1 to promote filipodia formation. Required for the actin-based mobility of Listeria monocytogenes (By similarity).

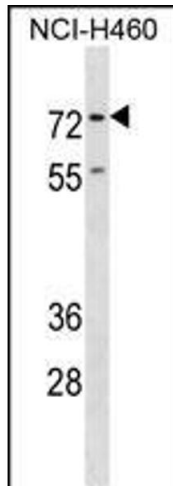
Molecular Weight:	66510
Gene ID:	55740
NCBI Accession:	NP_001008493 , NP_060682
UniProt:	Q8N8S7

Application Details

Application Notes:	WB: 1:1000
Restrictions:	For Research Use only

Handling

Format:	Liquid
Buffer:	Purified polyclonal antibody supplied in PBS with 0.09 % (W/V) sodium azide.
Preservative:	Sodium azide
Precaution of Use:	This product contains Sodium azide: a POISONOUS AND HAZARDOUS SUBSTANCE which should be handled by trained staff only.
Storage:	4 °C,-20 °C
Storage Comment:	ENAH Antibody (C-term) can be refrigerated at 2-8 °C for up to 6 months. For long term storage, keep at -20 °C.
Expiry Date:	6 months



Western Blotting

Image 1. ENAH Antibody (C-term) (ABIN1537349 and ABIN2838273) western blot analysis in NCI- cell line lysates (35 µg/lane). This demonstrates the ENAH antibody detected the ENAH protein (arrow).