

Datasheet for ABIN1537354
anti-FEM1C antibody (C-Term)[Go to Product page](#)

1 Image

Overview

Quantity:	400 µL
Target:	FEM1C
Binding Specificity:	AA 455-481, C-Term
Reactivity:	Human
Host:	Rabbit
Clonality:	Polyclonal
Conjugate:	This FEM1C antibody is un-conjugated
Application:	Western Blotting (WB)

Product Details

Immunogen:	This FEM1C antibody is generated from rabbits immunized with a KLH conjugated synthetic peptide between 455-481 amino acids from the C-terminal region of human FEM1C.
Clone:	RB37869
Isotype:	Ig Fraction
Predicted Reactivity:	B, M
Purification:	This antibody is purified through a protein A column, followed by peptide affinity purification.

Target Details

Target:	FEM1C
Alternative Name:	FEM1C (FEM1C Products)

Target Details

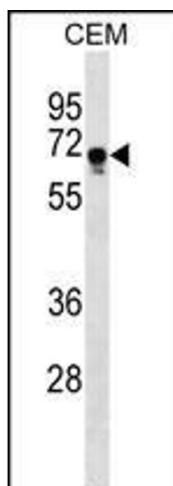
Background:	Probable component of an E3 ubiquitin-protein ligase complex, in which it may act as a substrate recognition subunit (By similarity).
Molecular Weight:	68673
Gene ID:	56929
NCBI Accession:	NP_064562
UniProt:	Q96JP0

Application Details

Application Notes:	WB: 1:1000
Restrictions:	For Research Use only

Handling

Format:	Liquid
Buffer:	Purified polyclonal antibody supplied in PBS with 0.09 % (W/V) sodium azide.
Preservative:	Sodium azide
Precaution of Use:	This product contains Sodium azide: a POISONOUS AND HAZARDOUS SUBSTANCE which should be handled by trained staff only.
Storage:	4 °C,-20 °C
Storage Comment:	FEM1C Antibody (C-term) can be refrigerated at 2-8 °C for up to 6 months. For long term storage, keep at -20 °C.
Expiry Date:	6 months



Western Blotting

Image 1. FEM1C Antibody (C-term) (ABIN1537354 and ABIN2849131) western blot analysis in CEM cell line lysates (35 µg/lane). This demonstrates the FEM1C antibody detected the FEM1C protein (arrow).