

Datasheet for ABIN1537356
anti-DDX6 antibody (C-Term)[Go to Product page](#)

1 Image

Overview

Quantity:	400 µL
Target:	DDX6
Binding Specificity:	AA 455-483, C-Term
Reactivity:	Human
Host:	Rabbit
Clonality:	Polyclonal
Conjugate:	This DDX6 antibody is un-conjugated
Application:	Western Blotting (WB)

Product Details

Immunogen:	This DDX6 antibody is generated from rabbits immunized with a KLH conjugated synthetic peptide between 455-483 amino acids from the C-terminal region of human DDX6.
Clone:	RB36738
Isotype:	Ig Fraction
Purification:	This antibody is purified through a protein A column, followed by peptide affinity purification.

Target Details

Target:	DDX6
Alternative Name:	DDX6 (DDX6 Products)
Background:	This gene encodes a member of the DEAD box protein family. The protein is an RNA helicase

Target Details

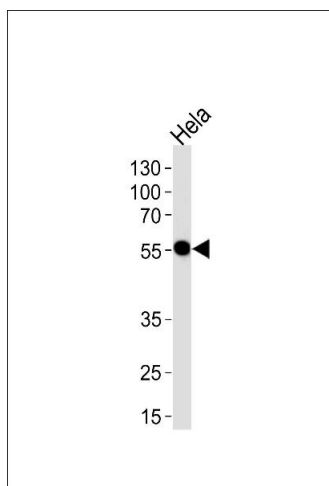
	found in P-bodies and stress granules, and functions in translation suppression and mRNA degradation. It is required for microRNA-induced gene silencing.
Molecular Weight:	54417
Gene ID:	1656
NCBI Accession:	NP_001244120 , NP_004388
UniProt:	P26196
Pathways:	Ribonucleoprotein Complex Subunit Organization

Application Details

Application Notes:	WB: 1:1000
Restrictions:	For Research Use only

Handling

Format:	Liquid
Buffer:	Purified polyclonal antibody supplied in PBS with 0.09 % (W/V) sodium azide.
Preservative:	Sodium azide
Precaution of Use:	This product contains Sodium azide: a POISONOUS AND HAZARDOUS SUBSTANCE which should be handled by trained staff only.
Storage:	4 °C, -20 °C
Storage Comment:	DDX6 Antibody (C-term) can be refrigerated at 2-8 °C for up to 6 months. For long term storage, keep at -20 °C.
Expiry Date:	6 months



Western Blotting

Image 1. Western blot analysis of lysate from HeLa cell line, using DDX6 Antibody (C-term) (ABIN1537356 and ABIN2848648). (ABIN1537356 and ABIN2848648) was diluted at 1:1000 at each lane. A goat anti-rabbit IgG H&L(HRP) at 1:5000 dilution was used as the secondary antibody. Lysate at 35 µg per lane.