

Datasheet for ABIN1537358
anti-PLEKHA8 antibody (C-Term)[Go to Product page](#)

1 Image

Overview

Quantity:	400 µL
Target:	PLEKHA8
Binding Specificity:	AA 456-482, C-Term
Reactivity:	Human
Host:	Rabbit
Clonality:	Polyclonal
Conjugate:	This PLEKHA8 antibody is un-conjugated
Application:	Western Blotting (WB)

Product Details

Immunogen:	This PLEKHA8 antibody is generated from rabbits immunized with a KLH conjugated synthetic peptide between 456-482 amino acids from the C-terminal region of human PLEKHA8.
Clone:	RB38526
Isotype:	Ig Fraction
Purification:	This antibody is purified through a protein A column, followed by peptide affinity purification.

Target Details

Target:	PLEKHA8
Alternative Name:	PLEKHA8 (PLEKHA8 Products)
Background:	PLEKHA8 is involved in TGN-to-plasma membrane transport and in the formation of post-Golgi

Target Details

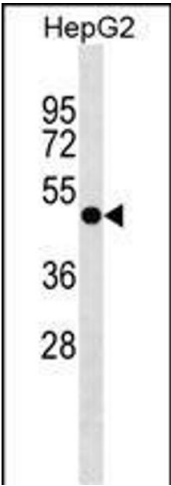
	constitutive carriers. May play a role in ensuring the coordination of the budding and the fission reactions.
Molecular Weight:	58261
Gene ID:	84725
NCBI Accession:	NP_001183955 , NP_001183956 , NP_116028
UniProt:	Q96JA3

Application Details

Application Notes:	WB: 1:1000
Restrictions:	For Research Use only

Handling

Format:	Liquid
Buffer:	Purified polyclonal antibody supplied in PBS with 0.09 % (W/V) sodium azide.
Preservative:	Sodium azide
Precaution of Use:	This product contains Sodium azide: a POISONOUS AND HAZARDOUS SUBSTANCE which should be handled by trained staff only.
Storage:	4 °C,-20 °C
Storage Comment:	PLEKHA8 Antibody (C-term) can be refrigerated at 2-8 °C for up to 6 months. For long term storage, keep at -20 °C.
Expiry Date:	6 months



Western Blotting

Image 1. PLEKHA8 Antibody (C-term) (ABIN1537358 and ABIN2849803) western blot analysis in HepG2 cell line lysates (35 µg/lane). This demonstrates the PLEKHA8 antibody detected the PLEKHA8 protein (arrow).