

Datasheet for ABIN1537371
anti-TROVE2 antibody (C-Term)[Go to Product page](#)

1 Image

Overview

Quantity:	400 µL
Target:	TROVE2
Binding Specificity:	AA 467-495, C-Term
Reactivity:	Human
Host:	Rabbit
Clonality:	Polyclonal
Conjugate:	This TROVE2 antibody is un-conjugated
Application:	Western Blotting (WB)

Product Details

Immunogen:	This TROVE2 antibody is generated from rabbits immunized with a KLH conjugated synthetic peptide between 467-495 amino acids from the C-terminal region of human TROVE2.
Clone:	RB36981
Isotype:	Ig Fraction
Predicted Reactivity:	M
Purification:	This antibody is purified through a protein A column, followed by peptide affinity purification.

Target Details

Target:	TROVE2
Alternative Name:	TROVE2 (TROVE2 Products)

Target Details

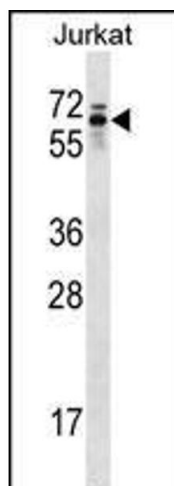
Background:	RNA-binding protein that binds to several small cytoplasmic RNA molecules known as Y RNAs. May stabilize these RNAs from degradation.
Molecular Weight:	60671
Gene ID:	6738
NCBI Accession:	NP_001035828 , NP_001035829 , NP_001166995 , NP_001166996 , NP_004591
UniProt:	P10155

Application Details

Application Notes:	WB: 1:1000
Restrictions:	For Research Use only

Handling

Format:	Liquid
Buffer:	Purified polyclonal antibody supplied in PBS with 0.09 % (W/V) sodium azide.
Preservative:	Sodium azide
Precaution of Use:	This product contains Sodium azide: a POISONOUS AND HAZARDOUS SUBSTANCE which should be handled by trained staff only.
Storage:	4 °C,-20 °C
Storage Comment:	TROVE2 Antibody (C-term) can be refrigerated at 2-8 °C for up to 6 months. For long term storage, keep at -20 °C.
Expiry Date:	6 months



Western Blotting

Image 1. TROVE2 Antibody (C-term) (ABIN1537371 and ABIN2848873) western blot analysis in Jurkat cell line lysates (35 µg/lane). This demonstrates the TROVE2 antibody detected the TROVE2 protein (arrow).