



Datasheet for ABIN1537374
anti-PBXIP1 antibody (C-Term)



[Go to Product page](#)

2 Images

Overview

Quantity:	400 µL
Target:	PBXIP1
Binding Specificity:	AA 472-501, C-Term
Reactivity:	Human
Host:	Rabbit
Clonality:	Polyclonal
Conjugate:	This PBXIP1 antibody is un-conjugated
Application:	Western Blotting (WB)

Product Details

Immunogen:	This PBXIP1 antibody is generated from rabbits immunized with a KLH conjugated synthetic peptide between 472-501 amino acids from the C-terminal region of human PBXIP1.
Clone:	RB36611
Isotype:	Ig Fraction
Purification:	This antibody is purified through a protein A column, followed by peptide affinity purification.

Target Details

Target:	PBXIP1
Alternative Name:	PBXIP1 (PBXIP1 Products)
Background:	Regulator of pre-B-cell leukemia transcription factors (BPXs) function. Inhibits the binding of

Target Details

PBX1-HOX complex to DNA and blocks the transcriptional activity of E2A-PBX1. Tethers estrogen receptor-alpha (ESR1) to microtubules and allows them to influence estrogen receptors-alpha signaling.

Molecular Weight: 80643

Gene ID: 57326

NCBI Accession: [NP_065385](#)

UniProt: [Q96AQ6](#)

Application Details

Application Notes: WB: 1:1000. WB: 1:1000

Restrictions: For Research Use only

Handling

Format: Liquid

Buffer: Purified polyclonal antibody supplied in PBS with 0.09 % (W/V) sodium azide.

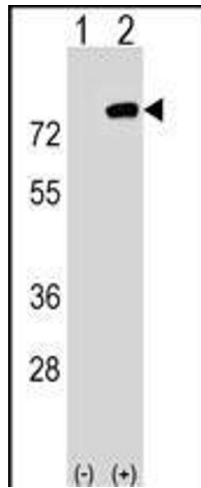
Preservative: Sodium azide

Precaution of Use: This product contains Sodium azide: a POISONOUS AND HAZARDOUS SUBSTANCE which should be handled by trained staff only.

Storage: 4 °C, -20 °C

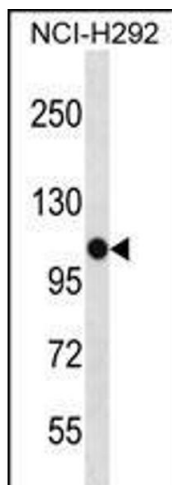
Storage Comment: PBXIP1 Antibody (C-term) can be refrigerated at 2-8 °C for up to 6 months. For long term storage, keep at -20 °C.

Expiry Date: 6 months



Western Blotting

Image 1. Western blot analysis of PBXIP1 (arrow) using rabbit polyclonal PBXIP1 Antibody (C-term) (ABIN1537374 and ABIN2848529). 293 cell lysates (2 µg/lane) either nontransfected (Lane 1) or transiently transfected (Lane 2) with the PBXIP1 gene.



Western Blotting

Image 2. PBXIP1 Antibody (C-term) (ABIN1537374 and ABIN2848529) western blot analysis in NCI- cell line lysates (35 µg/lane). This demonstrates the PBXIP1 antibody detected the PBXIP1 protein (arrow).