



[Go to Product page](#)

Datasheet for ABIN1537377
anti-CATSPER2 antibody (C-Term)

1 Image

Overview

Quantity:	400 µL
Target:	CATSPER2
Binding Specificity:	AA 472-500, C-Term
Reactivity:	Human
Host:	Rabbit
Clonality:	Polyclonal
Conjugate:	This CATSPER2 antibody is un-conjugated
Application:	Western Blotting (WB)

Product Details

Immunogen:	This CATSPER2 antibody is generated from rabbits immunized with a KLH conjugated synthetic peptide between 472-500 amino acids from the C-terminal region of human CATSPER2.
Clone:	RB39360
Isotype:	Ig Fraction
Purification:	This antibody is purified through a protein A column, followed by peptide affinity purification.

Target Details

Target:	CATSPER2
Alternative Name:	CATSPER2 (CATSPER2 Products)

Target Details

Background: Calcium ions play a primary role in the regulation of sperm motility. This gene belongs to a family of putative cation channels that are specific to spermatozoa and localize to the flagellum. The protein family features a single repeat with six membrane-spanning segments and a predicted calcium-selective pore region. This gene is part of a tandem repeat on chromosome 15q15, the second copy of this gene is thought to be a pseudogene. Additional splice variants have been described but their full-length nature has not been determined.

Molecular Weight: 62041

Gene ID: 117155

NCBI Accession: [NP_001269238](#), [NP_473361](#), [NP_742093](#), [NP_742095](#)

UniProt: [Q96P56](#)

Application Details

Application Notes: WB: 1:1000

Restrictions: For Research Use only

Handling

Format: Liquid

Buffer: Purified polyclonal antibody supplied in PBS with 0.09 % (W/V) sodium azide.

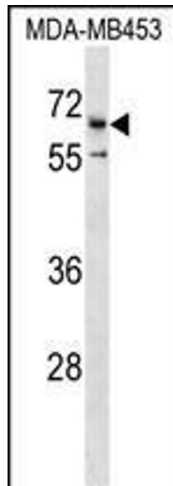
Preservative: Sodium azide

Precaution of Use: This product contains Sodium azide: a POISONOUS AND HAZARDOUS SUBSTANCE which should be handled by trained staff only.

Storage: 4 °C, -20 °C

Storage Comment: CATSPER2 Antibody (C-term) can be refrigerated at 2-8 °C for up to 6 months. For long term storage, keep at -20 °C.

Expiry Date: 6 months



Western Blotting

Image 1. CATSPER2 Antibody (C-term) (ABIN1537377 and ABIN2850383) western blot analysis in MDA-M cell line lysates (35 µg/lane). This demonstrates the CATSPER2 antibody detected the CATSPER2 protein (arrow).