

Datasheet for ABIN1537379  
**anti-TOM1L2 antibody (C-Term)**[Go to Product page](#)

## 1 Image

## Overview

Quantity:	400 µL
Target:	TOM1L2
Binding Specificity:	AA 474-500, C-Term
Reactivity:	Human
Host:	Rabbit
Clonality:	Polyclonal
Conjugate:	This TOM1L2 antibody is un-conjugated
Application:	Western Blotting (WB)

## Product Details

Immunogen:	This TOM1L2 antibody is generated from rabbits immunized with a KLH conjugated synthetic peptide between 474-500 amino acids from the C-terminal region of human TOM1L2.
Clone:	RB38627
Isotype:	Ig Fraction
Purification:	This antibody is purified through a protein A column, followed by peptide affinity purification.

## Target Details

Target:	TOM1L2
Alternative Name:	TOM1L2 ( <a href="#">TOM1L2 Products</a> )
Background:	TOM1L2 probable plays a role in protein transport. May regulate growth factor-induced

## Target Details

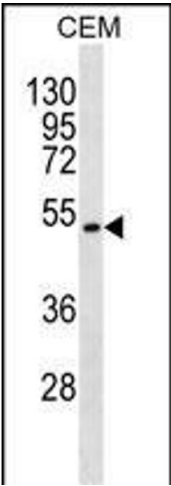
	mitogenic signaling.
Molecular Weight:	55556
Gene ID:	146691
NCBI Accession:	<a href="#">NP_001028723</a> , <a href="#">NP_001076437</a>
UniProt:	<a href="#">Q6ZVM7</a>

## Application Details

Application Notes:	WB: 1:1000
Restrictions:	For Research Use only

## Handling

Format:	Liquid
Buffer:	Purified polyclonal antibody supplied in PBS with 0.09 % (W/V) sodium azide.
Preservative:	Sodium azide
Precaution of Use:	This product contains Sodium azide: a POISONOUS AND HAZARDOUS SUBSTANCE which should be handled by trained staff only.
Storage:	4 °C, -20 °C
Storage Comment:	TOM1L2 Antibody (C-term) can be refrigerated at 2-8 °C for up to 6 months. For long term storage, keep at -20 °C.
Expiry Date:	6 months



Western Blotting

**Image 1.** TOM1L2 Antibody (C-term) (ABIN1537379 and ABIN2850138) western blot analysis in CEM cell line lysates (35 µg/lane). This demonstrates the TOM1L2 antibody detected the TOM1L2 protein (arrow).