



[Go to Product page](#)

Datasheet for ABIN1537382
anti-GLB1L3 antibody (C-Term)

1 Image

Overview

Quantity:	400 µL
Target:	GLB1L3
Binding Specificity:	AA 475-501, C-Term
Reactivity:	Human
Host:	Rabbit
Clonality:	Polyclonal
Conjugate:	This GLB1L3 antibody is un-conjugated
Application:	Western Blotting (WB)

Product Details

Immunogen:	This GLB1L3 antibody is generated from rabbits immunized with a KLH conjugated synthetic peptide between 475-501 amino acids from the C-terminal region of human GLB1L3.
Clone:	RB37927
Isotype:	Ig Fraction
Purification:	This antibody is purified through a protein A column, followed by peptide affinity purification.

Target Details

Target:	GLB1L3
Alternative Name:	GLB1L3 (GLB1L3 Products)
Background:	GLB1L3 belongs to the glycosyl hydrolase 35 family.

Target Details

Molecular Weight:	74823
Gene ID:	112937
NCBI Accession:	NP_001073876
UniProt:	Q8NCI6

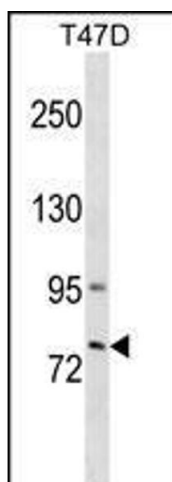
Application Details

Application Notes:	WB: 1:1000
Restrictions:	For Research Use only

Handling

Format:	Liquid
Buffer:	Purified polyclonal antibody supplied in PBS with 0.09 % (W/V) sodium azide.
Preservative:	Sodium azide
Precaution of Use:	This product contains Sodium azide: a POISONOUS AND HAZARDOUS SUBSTANCE which should be handled by trained staff only.
Storage:	4 °C, -20 °C
Storage Comment:	GLB1L3 Antibody (C-term) can be refrigerated at 2-8 °C for up to 6 months. For long term storage, keep at -20 °C.
Expiry Date:	6 months

Images



Western Blotting

Image 1. GLB1L3 Antibody (C-term) (ABIN1537382 and ABIN2849577) western blot analysis in T47D cell line lysates (35 µg/lane). This demonstrates the GLB1L3 antibody detected the GLB1L3 protein (arrow).