

Datasheet for ABIN1537383
anti-ZBTB22 antibody (C-Term)[Go to Product page](#)

1 Image

Overview

Quantity:	400 µL
Target:	ZBTB22
Binding Specificity:	AA 476-502, C-Term
Reactivity:	Human
Host:	Rabbit
Clonality:	Polyclonal
Conjugate:	This ZBTB22 antibody is un-conjugated
Application:	Western Blotting (WB)

Product Details

Immunogen:	This ZBTB22 antibody is generated from rabbits immunized with a KLH conjugated synthetic peptide between 476-502 amino acids from the C-terminal region of human ZBTB22.
Clone:	RB37480
Isotype:	Ig Fraction
Predicted Reactivity:	M
Purification:	This antibody is purified through a protein A column, followed by peptide affinity purification.

Target Details

Target:	ZBTB22
Alternative Name:	ZBTB22 (ZBTB22 Products)

Target Details

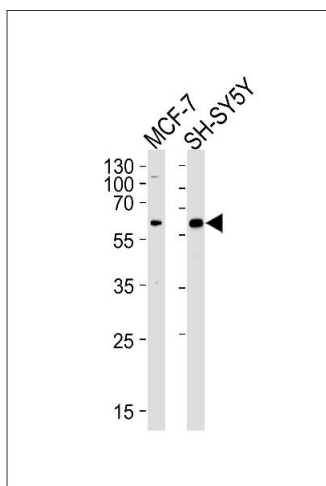
Background:	ZBTB22 may be involved in transcriptional regulation.
Molecular Weight:	65602
Gene ID:	9278
NCBI Accession:	NP_001138810 , NP_005444
UniProt:	O15209

Application Details

Application Notes:	WB: 1:1000
Restrictions:	For Research Use only

Handling

Format:	Liquid
Buffer:	Purified polyclonal antibody supplied in PBS with 0.09 % (W/V) sodium azide.
Preservative:	Sodium azide
Precaution of Use:	This product contains Sodium azide: a POISONOUS AND HAZARDOUS SUBSTANCE which should be handled by trained staff only.
Storage:	4 °C, -20 °C
Storage Comment:	ZBTB22 Antibody (C-term) can be refrigerated at 2-8 °C for up to 6 months. For long term storage, keep at -20 °C.
Expiry Date:	6 months



Western Blotting

Image 1. Western blot analysis of lysates from MCF-7, SH-SY5Y cell line (from left to right), using ZBTB22 Antibody (C-term) (ABIN1537383 and ABIN2849073). (ABIN1537383 and ABIN2849073) was diluted at 1:1000 at each lane. A goat anti-rabbit IgG H&L(HRP) at 1:5000 dilution was used as the secondary antibody. Lysates at 35 µg per lane.