

Datasheet for ABIN1537385
anti-ATL1 antibody (C-Term)



[Go to Product page](#)

1 Image

Overview

Quantity:	400 µL
Target:	ATL1
Binding Specificity:	AA 477-504, C-Term
Reactivity:	Human
Host:	Rabbit
Clonality:	Polyclonal
Conjugate:	This ATL1 antibody is un-conjugated
Application:	Western Blotting (WB)

Product Details

Immunogen:	This ATL1 antibody is generated from rabbits immunized with a KLH conjugated synthetic peptide between 477-504 amino acids from the C-terminal region of human ATL1.
Clone:	RB36288
Isotype:	Ig Fraction
Predicted Reactivity:	B, Pr, M, Rat
Purification:	This antibody is purified through a protein A column, followed by peptide affinity purification.

Target Details

Target:	ATL1
Alternative Name:	ATL1 (ATL1 Products)

Target Details

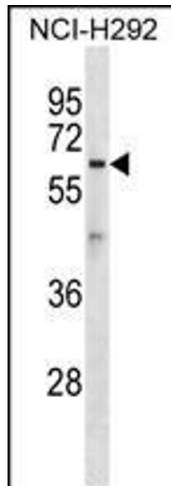
Background:	The protein encoded by this gene is a GTPase and a Golgi body transmembrane protein. The encoded protein can form a homotetramer and has been shown to interact with spastin and with mitogen-activated protein kinase kinase kinase kinase 4. This protein may be involved in axonal maintenance as evidenced by the fact that defects in this gene are a cause of spastic paraplegia type 3. Three transcript variants encoding two different isoforms have been found for this gene.
Molecular Weight:	63544
Gene ID:	51062
NCBI Accession:	NP_001121185 , NP_056999 , NP_853629
UniProt:	Q8WXF7

Application Details

Application Notes:	WB: 1:1000
Restrictions:	For Research Use only

Handling

Format:	Liquid
Buffer:	Purified polyclonal antibody supplied in PBS with 0.09 % (W/V) sodium azide.
Preservative:	Sodium azide
Precaution of Use:	This product contains Sodium azide: a POISONOUS AND HAZARDOUS SUBSTANCE which should be handled by trained staff only.
Storage:	4 °C, -20 °C
Storage Comment:	ATL1 Antibody (C-term) can be refrigerated at 2-8 °C for up to 6 months. For long term storage, keep at -20 °C.
Expiry Date:	6 months



Western Blotting

Image 1. ATL1 Antibody (C-term) (ABIN1537385 and ABIN2848491) western blot analysis in NCI- cell line lysates (35 µg/lane). This demonstrates the ATL1 antibody detected the ATL1 protein (arrow).