

Datasheet for ABIN1537386  
**anti-RHPN1 antibody (C-Term)**[Go to Product page](#)

## 2 Images

## Overview

Quantity:	400 µL
Target:	RHPN1
Binding Specificity:	AA 478-505, C-Term
Reactivity:	Human, Mouse
Host:	Rabbit
Clonality:	Polyclonal
Conjugate:	This RHPN1 antibody is un-conjugated
Application:	Western Blotting (WB)

## Product Details

Immunogen:	This RHPN1 antibody is generated from rabbits immunized with a KLH conjugated synthetic peptide between 478-505 amino acids from the C-terminal region of human RHPN1.
Clone:	RB37618
Isotype:	Ig Fraction
Purification:	This antibody is purified through a protein A column, followed by peptide affinity purification.

## Target Details

Target:	RHPN1
Alternative Name:	RHPN1 ( <a href="#">RHPN1 Products</a> )
Background:	RHPN1 has no enzymatic activity. May serve as a target for Rho, and interact with some

## Target Details

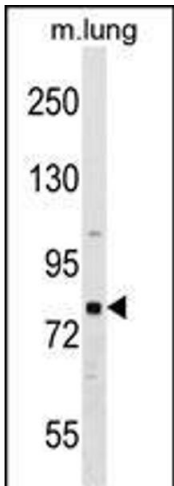
	cytoskeletal component upon Rho binding or relay a Rho signal to other molecules (By similarity).
Molecular Weight:	73590
Gene ID:	114822
NCBI Accession:	<a href="#">NP_443156</a>
UniProt:	<a href="#">Q8TCX5</a>

## Application Details

Application Notes:	WB: 1:1000. WB: 1:1000
Restrictions:	For Research Use only

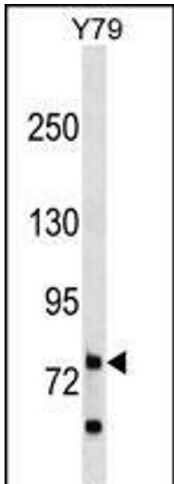
## Handling

Format:	Liquid
Buffer:	Purified polyclonal antibody supplied in PBS with 0.09 % (W/V) sodium azide.
Preservative:	Sodium azide
Precaution of Use:	This product contains Sodium azide: a POISONOUS AND HAZARDOUS SUBSTANCE which should be handled by trained staff only.
Storage:	4 °C,-20 °C
Storage Comment:	RHPN1 Antibody (C-term) can be refrigerated at 2-8 °C for up to 6 months. For long term storage, keep at -20 °C.
Expiry Date:	6 months



Western Blotting

**Image 1.** RHPN1 Antibody (C-term) (ABIN1537386 and ABIN2849734) western blot analysis in mouse lung tissue lysates (35 µg/lane). This demonstrates the RHPN1 antibody detected the RHPN1 protein (arrow).



Western Blotting

**Image 2.** RHPN1 Antibody (C-term) (ABIN1537386 and ABIN2849734) western blot analysis in Y79 cell line lysates (35 µg/lane). This demonstrates the RHPN1 antibody detected the RHPN1 protein (arrow).