

Datasheet for ABIN1537393  
**anti-STRA6 antibody (C-Term)**[Go to Product page](#)

## 1 Image

## Overview

Quantity:	400 µL
Target:	STRA6
Binding Specificity:	AA 483-509, C-Term
Reactivity:	Rat
Host:	Rabbit
Clonality:	Polyclonal
Conjugate:	This STRA6 antibody is un-conjugated
Application:	Western Blotting (WB)

## Product Details

Immunogen:	This Rat Stra6 antibody is generated from rabbits immunized with a KLH conjugated synthetic peptide between 483-509 amino acids from the C-terminal region of rat Stra6.
Clone:	RB38667
Isotype:	Ig Fraction
Purification:	This antibody is purified through a protein A column, followed by peptide affinity purification.

## Target Details

Target:	STRA6
Alternative Name:	Stra6 ( <a href="#">STRA6 Products</a> )
Background:	Stra6 may act as a high-affinity cell-surface receptor for the complex retinol-retinol binding

## Target Details

protein (RBP/RBP4). Acts by removing retinol from RBP/RBP4 and transports it across the plasma membrane, where it can be metabolized. This mechanism does not depend on endocytosis. Binds to RBP/RBP4 with high affinity. Increases cellular retinol uptake from the retinol-RBP complex (By similarity).

Molecular Weight: 73763

Gene ID: 363071

NCBI Accession: [NP\\_001025095](#)

UniProt: [Q4QR83](#)

Pathways: [Feeding Behaviour](#)

## Application Details

Application Notes: WB: 1:1000

Restrictions: For Research Use only

## Handling

Format: Liquid

Buffer: Purified polyclonal antibody supplied in PBS with 0.09 % (W/V) sodium azide.

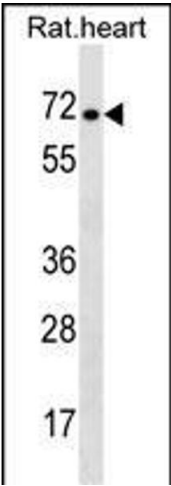
Preservative: Sodium azide

Precaution of Use: This product contains Sodium azide: a POISONOUS AND HAZARDOUS SUBSTANCE which should be handled by trained staff only.

Storage: 4 °C,-20 °C

Storage Comment: Rat Stra6 Antibody (C-term) can be refrigerated at 2-8 °C for up to 6 months. For long term storage, keep at -20 °C.

Expiry Date: 6 months



Western Blotting

**Image 1.** Rat Stra6 Antibody (C-term) (ABIN1537393 and ABIN2850195) western blot analysis in rat heart tissue lysates (35 µg/lane). This demonstrates the Stra6 antibody detected the Stra6 protein (arrow).