

Datasheet for ABIN1537398
anti-TFE3 antibody (C-Term)[Go to Product page](#)

1 Image

Overview

Quantity:	400 µL
Target:	TFE3
Binding Specificity:	AA 489-516, C-Term
Reactivity:	Human, Mouse
Host:	Rabbit
Clonality:	Polyclonal
Conjugate:	This TFE3 antibody is un-conjugated
Application:	Western Blotting (WB)

Product Details

Immunogen:	This TFE3 antibody is generated from rabbits immunized with a KLH conjugated synthetic peptide between 489-516 amino acids from the C-terminal region of human TFE3.
Clone:	RB20264
Isotype:	Ig Fraction
Predicted Reactivity:	B
Purification:	This antibody is purified through a protein A column, followed by peptide affinity purification.

Target Details

Target:	TFE3
Alternative Name:	TFE3 (TFE3 Products)

Target Details

Background: The microphthalmia transcription factor/transcription factor E (MITF-TFE) family of basic helix-loop-helix leucine zipper (bHLH-Zip) transcription factors includes four family members: MITF, TFE3, TFEB and TFEC. The TFE3 protein encoded by this gene activates transcription through binding to the muE3 motif of the immunoglobulin heavy-chain enhancer. The TFEC protein forms heterodimers with the TFE3 protein and inhibits TFE3-dependent transcription activation. The TFE3 protein interacts with transcription regulators such as E2F3, SMAD3, and LEF-1, and is involved in TGF-beta-induced transcription, playing important roles in cell growth, proliferation, and osteoclast and macrophage differentiation. The TFE3 protein also activates hepatic IRS-2 gene, and induces hexokinase II (HK2) and insulin-induced gene 1 (INSIG1), it participates in insulin signaling and could be a therapeutic target for diabetes. This gene is also involved in chromosomal translocations, resulting in different fusion gene products in papillary renal cell carcinomas and alveolar soft part sarcomas, such as PRCC-TFE3, RCC17-TFE3, PSF-TFE3, NonO (p54nrb)-TFE3 and ASPL-TFE3.

Molecular Weight: 61521

Gene ID: 7030

NCBI Accession: [NP_006512](#)

UniProt: [P19532](#)

Application Details

Application Notes: WB: 1:1000

Restrictions: For Research Use only

Handling

Format: Liquid

Buffer: Purified polyclonal antibody supplied in PBS with 0.09 % (W/V) sodium azide.

Preservative: Sodium azide

Precaution of Use: This product contains Sodium azide: a POISONOUS AND HAZARDOUS SUBSTANCE which should be handled by trained staff only.

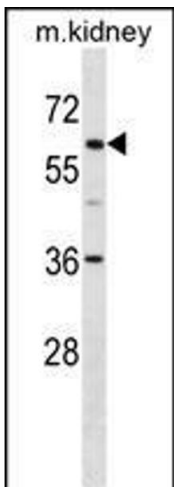
Storage: 4 °C, -20 °C

Storage Comment: TFE3 Antibody (C-term) can be refrigerated at 2-8 °C for up to 6 months. For long term storage, keep at -20 °C.

Handling

Expiry Date: 6 months

Images



Western Blotting

Image 1. TFE3 Antibody (C-term) (ABIN1537398 and ABIN2849813) western blot analysis in mouse kidney tissue lysates (35 µg/lane). This demonstrates the TFE3 Antibody detected the TFE3 protein (arrow).