

Datasheet for ABIN1537409  
**anti-FZD3 antibody (C-Term)**[Go to Product page](#)

## 1 Image

## Overview

Quantity:	400 µL
Target:	FZD3
Binding Specificity:	AA 496-525, C-Term
Reactivity:	Human
Host:	Rabbit
Clonality:	Polyclonal
Conjugate:	This FZD3 antibody is un-conjugated
Application:	Western Blotting (WB)

## Product Details

Immunogen:	This FZD3 antibody is generated from rabbits immunized with a KLH conjugated synthetic peptide between 496-525 amino acids from the C-terminal region of human FZD3.
Clone:	RB37407
Isotype:	Ig Fraction
Predicted Reactivity:	M
Purification:	This antibody is purified through a protein A column, followed by peptide affinity purification.

## Target Details

Target:	FZD3
Alternative Name:	FZD3 ( <a href="#">FZD3 Products</a> )

## Target Details

**Background:** This gene is a member of the frizzled gene family. Members of this family encode seven-transmembrane domain proteins that are receptors for the Wingless type MMTV integration site family of signaling proteins. Most frizzled receptors are coupled to the beta-catenin canonical signaling pathway. The function of this protein is unknown, although it may play a role in mammalian hair follicle development.

**Molecular Weight:** 76263

**Gene ID:** 7976

**NCBI Accession:** [NP\\_059108](#), [NP\\_665873](#)

**UniProt:** [Q9NPG1](#)

**Pathways:** [WNT Signaling](#), [Tube Formation](#)

## Application Details

**Application Notes:** WB: 1:1000

**Restrictions:** For Research Use only

## Handling

**Format:** Liquid

**Buffer:** Purified polyclonal antibody supplied in PBS with 0.09 % (W/V) sodium azide.

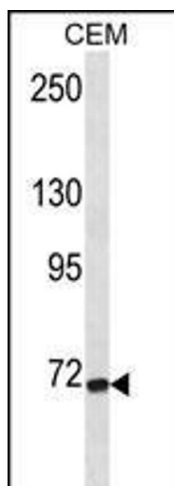
**Preservative:** Sodium azide

**Precaution of Use:** This product contains Sodium azide: a POISONOUS AND HAZARDOUS SUBSTANCE which should be handled by trained staff only.

**Storage:** 4 °C, -20 °C

**Storage Comment:** FZD3 Antibody (C-term) can be refrigerated at 2-8 °C for up to 6 months. For long term storage, keep at -20 °C.

**Expiry Date:** 6 months



#### Western Blotting

**Image 1.** FZD3 Antibody (C-term) (ABIN1537409 and ABIN2850121) western blot analysis in CEM cell line lysates (35 µg/lane). This demonstrates the FZD3 antibody detected the FZD3 protein (arrow).