

Datasheet for ABIN1537417
anti-CECR6 antibody (C-Term)[Go to Product page](#)

1 Image

Overview

Quantity:	400 µL
Target:	CECR6
Binding Specificity:	AA 504-531, C-Term
Reactivity:	Human, Mouse
Host:	Rabbit
Clonality:	Polyclonal
Conjugate:	This CECR6 antibody is un-conjugated
Application:	Western Blotting (WB)

Product Details

Immunogen:	This CECR6 antibody is generated from rabbits immunized with a KLH conjugated synthetic peptide between 504-531 amino acids from the C-terminal region of human CECR6.
Clone:	RB23126
Isotype:	Ig Fraction
Purification:	This antibody is purified through a protein A column, followed by peptide affinity purification.

Target Details

Target:	CECR6
Alternative Name:	CECR6 (CECR6 Products)
Background:	The exact function of CECR6 remains unknown.

Target Details

Molecular Weight:	58425
Gene ID:	27439
NCBI Accession:	NP_001156551 , NP_114096
UniProt:	Q9BXQ6

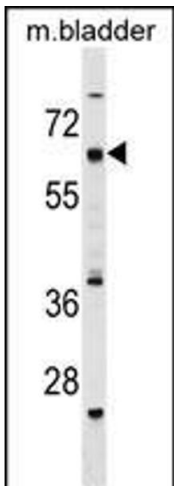
Application Details

Application Notes:	WB: 1:1000
Restrictions:	For Research Use only

Handling

Format:	Liquid
Buffer:	Purified polyclonal antibody supplied in PBS with 0.09 % (W/V) sodium azide.
Preservative:	Sodium azide
Precaution of Use:	This product contains Sodium azide: a POISONOUS AND HAZARDOUS SUBSTANCE which should be handled by trained staff only.
Storage:	4 °C, -20 °C
Storage Comment:	CECR6 Antibody (C-term) can be refrigerated at 2-8 °C for up to 6 months. For long term storage, keep at -20 °C.
Expiry Date:	6 months

Images



Western Blotting

Image 1. CECR6 Antibody (C-term) (ABIN1537417 and ABIN2849405) western blot analysis in mouse bladder tissue lysates (35 µg/lane). This demonstrates the CECR6 antibody detected the CECR6 protein (arrow).