

Datasheet for ABIN1537428
anti-GOLGA6A antibody (C-Term)[Go to Product page](#)

1 Image

Overview

Quantity:	400 µL
Target:	GOLGA6A
Binding Specificity:	AA 516-543, C-Term
Reactivity:	Human
Host:	Rabbit
Clonality:	Polyclonal
Conjugate:	This GOLGA6A antibody is un-conjugated
Application:	Western Blotting (WB)

Product Details

Immunogen:	This GOLGA6A antibody is generated from rabbits immunized with a KLH conjugated synthetic peptide between 516-543 amino acids from the C-terminal region of human GOLGA6A.
Clone:	RB38480
Isotype:	Ig Fraction
Purification:	This antibody is purified through a protein A column, followed by peptide affinity purification.

Target Details

Target:	GOLGA6A
Alternative Name:	GOLGA6A (GOLGA6A Products)
Background:	The Golgi apparatus, which participates in glycosylation and transport of proteins and lipids in

Target Details

the secretory pathway, consists of a series of stacked cisternae (flattened membrane sacs). Interactions between the Golgi and microtubules are thought to be important for the reorganization of the Golgi after it fragments during mitosis. The protein encoded by this gene is a member of the golgin family of proteins, whose members localize to the Golgi. This gene is found in a large, low copy repeat sequence or duplicon that is found in multiple copies, that are greather than 90 % similar, on chromosome 15. Duplicons are associated with deletions, inversions and other chromosome rearrangements that underlie genomic disease. The protein encoded by this gene is thought to be a functional golgin protein while the majority of the related copies of this gene are thought to be transcribed pseudogenes.

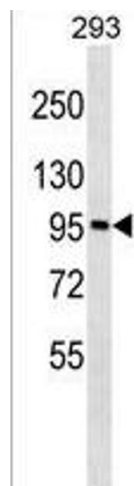
Molecular Weight:	79946
Gene ID:	342096
NCBI Accession:	NP_001033729
UniProt:	Q9NYA3

Application Details

Application Notes:	WB: 1:1000
Restrictions:	For Research Use only

Handling

Format:	Liquid
Buffer:	Purified polyclonal antibody supplied in PBS with 0.09 % (W/V) sodium azide.
Preservative:	Sodium azide
Precaution of Use:	This product contains Sodium azide: a POISONOUS AND HAZARDOUS SUBSTANCE which should be handled by trained staff only.
Storage:	4 °C, -20 °C
Storage Comment:	GOLGA6A Antibody (C-term) can be refrigerated at 2-8 °C for up to 6 months. For long term storage, keep at -20 °C.
Expiry Date:	6 months



Western Blotting

Image 1. GOLGA6A Antibody (C-term) (ABIN1537428 and ABIN2849898) western blot analysis in 293 cell line lysates (35 µg/lane). This demonstrates the GOLGA6A Antibody detected the GOLGA6A protein (arrow).