

Datasheet for ABIN1537440
anti-GFR antibody (C-Term)[Go to Product page](#)

1 Image

Overview

Quantity:	400 µL
Target:	GFR (RAPGEF5)
Binding Specificity:	AA 529-555, C-Term
Reactivity:	Human
Host:	Rabbit
Clonality:	Polyclonal
Conjugate:	This GFR antibody is un-conjugated
Application:	Western Blotting (WB)

Product Details

Immunogen:	This RAPGEF5 antibody is generated from rabbits immunized with a KLH conjugated synthetic peptide between 529-555 amino acids from the C-terminal region of human RAPGEF5.
Clone:	RB36938
Isotype:	Ig Fraction
Purification:	This antibody is purified through a protein A column, followed by peptide affinity purification.

Target Details

Target:	GFR (RAPGEF5)
Alternative Name:	RAPGEF5 (RAPGEF5 Products)
Background:	Members of the RAS (see HRAS, MIM 190020) subfamily of GTPases function in signal

Target Details

transduction as GTP/GDP-regulated switches that cycle between inactive GDP- and active GTP-bound states. Guanine nucleotide exchange factors (GEFs), such as RAPGEF5, serve as RAS activators by promoting acquisition of GTP to maintain the active GTP-bound state and are the key link between cell surface receptors and RAS activation (Rebhun et al., 2000 [PubMed 10934204]).

Molecular Weight: 67733

Gene ID: 9771

NCBI Accession: [NP_036426](#)

UniProt: [Q92565](#)

Pathways: [RTK Signaling](#), [Neurotrophin Signaling Pathway](#), [Hepatitis C](#)

Application Details

Application Notes: WB: 1:1000

Restrictions: For Research Use only

Handling

Format: Liquid

Buffer: Purified polyclonal antibody supplied in PBS with 0.09 % (W/V) sodium azide.

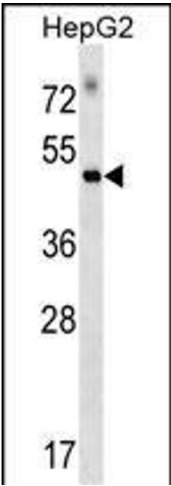
Preservative: Sodium azide

Precaution of Use: This product contains Sodium azide: a POISONOUS AND HAZARDOUS SUBSTANCE which should be handled by trained staff only.

Storage: 4 °C, -20 °C

Storage Comment: RAPGEF5 Antibody (C-term) can be refrigerated at 2-8 °C for up to 6 months. For long term storage, keep at -20 °C.

Expiry Date: 6 months



Western Blotting

Image 1. RGEF5 Antibody (C-term) 17073b western blot analysis in HepG2 cell line lysates (35 µg/lane). This demonstrates the RGEF5 antibody detected the RGEF5 protein (arrow).