

Datasheet for ABIN1537449
anti-POMT2 antibody (C-Term)[Go to Product page](#)

1 Image

Overview

Quantity:	400 µL
Target:	POMT2
Binding Specificity:	AA 540-567, C-Term
Reactivity:	Human
Host:	Rabbit
Clonality:	Polyclonal
Conjugate:	This POMT2 antibody is un-conjugated
Application:	Western Blotting (WB)

Product Details

Immunogen:	This POMT2 antibody is generated from rabbits immunized with a KLH conjugated synthetic peptide between 540-567 amino acids from the C-terminal region of human POMT2.
Clone:	RB37546
Isotype:	Ig Fraction
Predicted Reactivity:	M
Purification:	This antibody is purified through a protein A column, followed by peptide affinity purification.

Target Details

Target:	POMT2
Alternative Name:	POMT2 (POMT2 Products)

Target Details

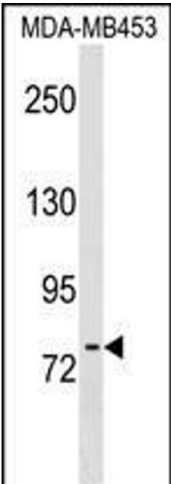
Background:	The protein encoded by this gene is an O-mannosyltransferase that requires interaction with the product of the POMT1 gene for enzymatic function. The encoded protein is found in the membrane of the endoplasmic reticulum. Defects in this gene are a cause of Walker-Warburg syndrome (WWS).
Molecular Weight:	84214
Gene ID:	29954
NCBI Accession:	NP_037514
UniProt:	Q9UKY4

Application Details

Application Notes:	WB: 1:1000
Restrictions:	For Research Use only

Handling

Format:	Liquid
Buffer:	Purified polyclonal antibody supplied in PBS with 0.09 % (W/V) sodium azide.
Preservative:	Sodium azide
Precaution of Use:	This product contains Sodium azide: a POISONOUS AND HAZARDOUS SUBSTANCE which should be handled by trained staff only.
Storage:	4 °C, -20 °C
Storage Comment:	POMT2 Antibody (C-term) can be refrigerated at 2-8 °C for up to 6 months. For long term storage, keep at -20 °C.
Expiry Date:	6 months



Western Blotting

Image 1. POMT2 Antibody (C-term) (ABIN1537449 and ABIN2848988) western blot analysis in MDA-M cell line lysates (35 µg/lane). This demonstrates the POMT2 antibody detected the POMT2 protein (arrow).