

Datasheet for ABIN1537461
anti-PES1 antibody (C-Term)[Go to Product page](#)

1 Image

Overview

Quantity:	400 µL
Target:	PES1
Binding Specificity:	AA 549-578, C-Term
Reactivity:	Human
Host:	Rabbit
Clonality:	Polyclonal
Conjugate:	This PES1 antibody is un-conjugated
Application:	Western Blotting (WB)

Product Details

Immunogen:	This PES1 antibody is generated from rabbits immunized with a KLH conjugated synthetic peptide between 549-578 amino acids from the C-terminal region of human PES1.
Clone:	RB40983
Isotype:	Ig Fraction
Purification:	This antibody is purified through a protein A column, followed by peptide affinity purification.

Target Details

Target:	PES1
Alternative Name:	PES1 (PES1 Products)
Background:	This gene encodes a protein that is abnormally elevated in malignant tumors of astrocytic

Target Details

origin. It is a strongly conserved gene containing a BRCT domain that is essential for the activity of this gene product. The gene plays a crucial role in cell proliferation and may be necessary for oncogenic transformation and tumor progression.

Molecular Weight: 68003

Gene ID: 23481

NCBI Accession: [NP_001230154](#), [NP_055118](#)

UniProt: [O00541](#)

Application Details

Application Notes: WB: 1:1000

Restrictions: For Research Use only

Handling

Format: Liquid

Buffer: Purified polyclonal antibody supplied in PBS with 0.09 % (W/V) sodium azide.

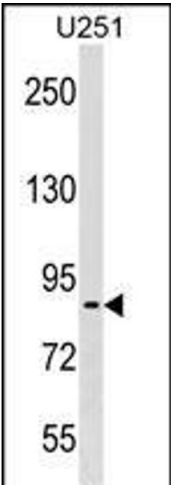
Preservative: Sodium azide

Precaution of Use: This product contains Sodium azide: a POISONOUS AND HAZARDOUS SUBSTANCE which should be handled by trained staff only.

Storage: 4 °C, -20 °C

Storage Comment: PES1 Antibody (C-term) can be refrigerated at 2-8 °C for up to 6 months. For long term storage, keep at -20 °C.

Expiry Date: 6 months



Western Blotting

Image 1. PES1 Antibody (C-term) (ABIN1537461 and ABIN2838150) western blot analysis in cell line lysates (35 µg/lane). This demonstrates the PES1 antibody detected the PES1 protein (arrow).