



[Go to Product page](#)

Datasheet for ABIN1537470  
**anti-MS4A14 antibody (C-Term)**

1 Image

Overview

Quantity:	400 µL
Target:	MS4A14
Binding Specificity:	AA 556-585, C-Term
Reactivity:	Human
Host:	Rabbit
Clonality:	Polyclonal
Conjugate:	This MS4A14 antibody is un-conjugated
Application:	Western Blotting (WB)

Product Details

Immunogen:	This MS4A14 antibody is generated from rabbits immunized with a KLH conjugated synthetic peptide between 556-585 amino acids from the C-terminal region of human MS4A14.
Clone:	RB26700
Isotype:	Ig Fraction
Purification:	This antibody is purified through a protein A column, followed by peptide affinity purification.

Target Details

Target:	MS4A14
Alternative Name:	MS4A14 ( <a href="#">MS4A14 Products</a> )
Background:	MS4A14 may be involved in signal transduction as a component of a multimeric receptor

## Target Details

---

complex (By similarity).

Molecular Weight: 76580

Gene ID: 84689

NCBI Accession: [NP\\_001073160](#), [NP\\_115986](#)

UniProt: [Q96JA4](#)

## Application Details

---

Application Notes: WB: 1:1000

Restrictions: For Research Use only

## Handling

---

Format: Liquid

Buffer: Purified polyclonal antibody supplied in PBS with 0.09 % (W/V) sodium azide.

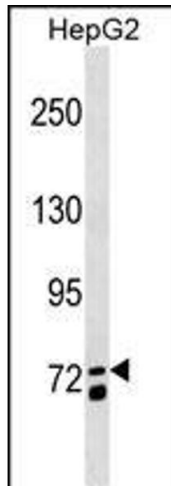
Preservative: Sodium azide

Precaution of Use: This product contains Sodium azide: a POISONOUS AND HAZARDOUS SUBSTANCE which should be handled by trained staff only.

Storage: 4 °C, -20 °C

Storage Comment: MS4A14 Antibody (C-term) can be refrigerated at 2-8 °C for up to 6 months. For long term storage, keep at -20 °C.

Expiry Date: 6 months



### Western Blotting

**Image 1.** MS4A14 Antibody (C-term) (ABIN1537470 and ABIN2849678) western blot analysis in HepG2 cell line lysates (35 µg/lane). This demonstrates the MS4A14 antibody detected the MS4A14 protein (arrow).