



[Go to Product page](#)

Datasheet for ABIN1537474
anti-EPB41L4A antibody (C-Term)

1 Image

Overview

Quantity:	400 µL
Target:	EPB41L4A
Binding Specificity:	AA 562-590, C-Term
Reactivity:	Human
Host:	Rabbit
Clonality:	Polyclonal
Conjugate:	This EPB41L4A antibody is un-conjugated
Application:	Western Blotting (WB)

Product Details

Immunogen:	This EPB41L4A antibody is generated from rabbits immunized with a KLH conjugated synthetic peptide between 562-590 amino acids from the C-terminal region of human EPB41L4A.
Clone:	RB37246
Isotype:	Ig Fraction
Purification:	This antibody is purified through a protein A column, followed by peptide affinity purification.

Target Details

Target:	EPB41L4A
Alternative Name:	EPB41L4A (EPB41L4A Products)
Background:	Members of the band 4.1 protein superfamily, including EPB41L4A, are thought to regulate the

Target Details

interaction between the cytoskeleton and plasma membrane (Ishiguro et al., 2000 [PubMed 10874211]).

Gene ID: 64097

NCBI Accession: [NP_071423](#)

UniProt: [Q9HCS5](#)

Application Details

Application Notes: WB: 1:1000

Restrictions: For Research Use only

Handling

Format: Liquid

Buffer: Purified polyclonal antibody supplied in PBS with 0.09 % (W/V) sodium azide.

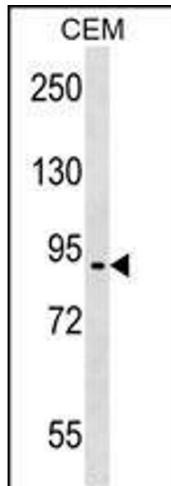
Preservative: Sodium azide

Precaution of Use: This product contains Sodium azide: a POISONOUS AND HAZARDOUS SUBSTANCE which should be handled by trained staff only.

Storage: 4 °C, -20 °C

Storage Comment: EPB41L4A Antibody (C-term) can be refrigerated at 2-8 °C for up to 6 months. For long term storage, keep at -20 °C.

Expiry Date: 6 months



Western Blotting

Image 1. EPB41L4A Antibody (C-term) (ABIN1537474 and ABIN2848897) western blot analysis in CEM cell line lysates (35 µg/lane). This demonstrates the EPB41L4A antibody detected the EPB41L4A protein (arrow).