

Datasheet for ABIN1537475  
**anti-PHEX antibody (C-Term)**[Go to Product page](#)

## 1 Image

## Overview

Quantity:	400 µL
Target:	PHEX
Binding Specificity:	AA 567-595, C-Term
Reactivity:	Human
Host:	Rabbit
Clonality:	Polyclonal
Conjugate:	This PHEX antibody is un-conjugated
Application:	Western Blotting (WB)

## Product Details

Immunogen:	This PHEX antibody is generated from rabbits immunized with a KLH conjugated synthetic peptide between 567-595 amino acids from the C-terminal region of human PHEX.
Clone:	RB36572
Isotype:	Ig Fraction
Predicted Reactivity:	M
Purification:	This antibody is purified through a protein A column, followed by peptide affinity purification.

## Target Details

Target:	PHEX
Alternative Name:	PHEX ( <a href="#">PHEX Products</a> )

## Target Details

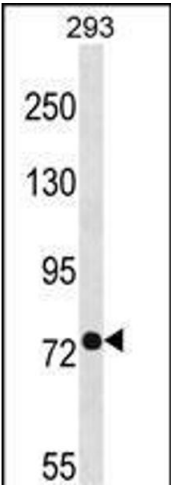
Background:	The protein encoded by this gene is a transmembrane endopeptidase that belongs to the type II integral membrane zinc-dependent endopeptidase family. The protein is thought to be involved in bone and dentin mineralization and renal phosphate reabsorption. Mutations in this gene cause X-linked hypophosphatemic rickets.
Molecular Weight:	86474
Gene ID:	5251
NCBI Accession:	<a href="#">NP_000435</a>
UniProt:	<a href="#">P78562</a>

## Application Details

Application Notes:	WB: 1:1000
Restrictions:	For Research Use only

## Handling

Format:	Liquid
Buffer:	Purified polyclonal antibody supplied in PBS with 0.09 % (W/V) sodium azide.
Preservative:	Sodium azide
Precaution of Use:	This product contains Sodium azide: a POISONOUS AND HAZARDOUS SUBSTANCE which should be handled by trained staff only.
Storage:	4 °C,-20 °C
Storage Comment:	PHEX Antibody (C-term) can be refrigerated at 2-8 °C for up to 6 months. For long term storage, keep at -20 °C.
Expiry Date:	6 months



Western Blotting

**Image 1.** PHEX Antibody (C-term) (ABIN1537475 and ABIN2848519) western blot analysis in 293 cell line lysates (35 µg/lane). This demonstrates the PHEX antibody detected the PHEX protein (arrow).