

Datasheet for ABIN1537480  
**anti-LOXL4 antibody (C-Term)**[Go to Product page](#)

## 3 Images

## Overview

Quantity:	400 µL
Target:	LOXL4
Binding Specificity:	AA 575-603, C-Term
Reactivity:	Human, Mouse
Host:	Rabbit
Clonality:	Polyclonal
Conjugate:	This LOXL4 antibody is un-conjugated
Application:	Western Blotting (WB), Flow Cytometry (FACS)

## Product Details

Immunogen:	This LOXL4 antibody is generated from rabbits immunized with a KLH conjugated synthetic peptide between 575-603 amino acids from the C-terminal region of human LOXL4.
Clone:	RB37048
Isotype:	Ig Fraction
Purification:	This antibody is purified through a protein A column, followed by peptide affinity purification.

## Target Details

Target:	LOXL4
Alternative Name:	LOXL4 ( <a href="#">LOXL4 Products</a> )
Background:	This gene encodes a member of the lysyl oxidase gene family. The prototypic member of the

## Target Details

family is essential to the biogenesis of connective tissue, encoding an extracellular copper-dependent amine oxidase that catalyses the first step in the formation of crosslinks in collagens and elastin. A highly conserved amino acid sequence at the C-terminus end appears to be sufficient for amine oxidase activity, suggesting that each family member may retain this function. The N-terminus is poorly conserved and may impart additional roles in developmental regulation, senescence, tumor suppression, cell growth control, and chemotaxis to each member of the family.

Molecular Weight: 84483

Gene ID: 84171

NCBI Accession: [NP\\_115587](#)

UniProt: [Q96JB6](#)

## Application Details

Application Notes: WB: 1:2000. WB: 1:1000. FC: 1:25

Restrictions: For Research Use only

## Handling

Format: Liquid

Buffer: Purified polyclonal antibody supplied in PBS with 0.09 % (W/V) sodium azide.

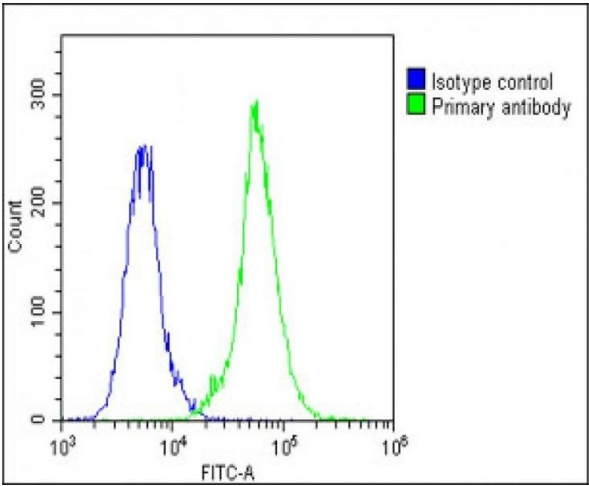
Preservative: Sodium azide

Precaution of Use: This product contains Sodium azide: a POISONOUS AND HAZARDOUS SUBSTANCE which should be handled by trained staff only.

Storage: 4 °C, -20 °C

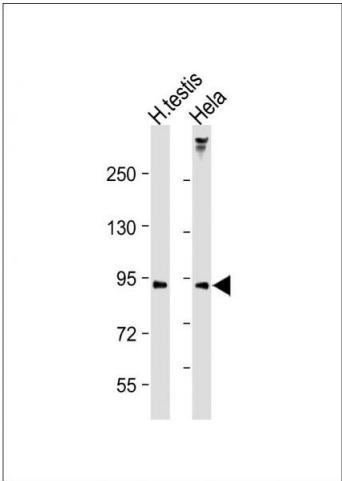
Storage Comment: LOXL4 Antibody (C-term) can be refrigerated at 2-8 °C for up to 6 months. For long term storage, keep at -20 °C.

Expiry Date: 6 months



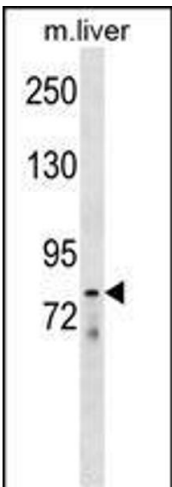
### Flow Cytometry

**Image 1.** Overlay histogram showing A549 cells stained with (ABIN1537480 and ABIN2848885)(green line). The cells were fixed with 2 % paraformaldehyde (10 min) and then permeabilized with 90 % methanol for 10 min. The cells were then incubated in 2 % bovine serum albumin to block non-specific protein-protein interactions followed by the antibody ((ABIN1537480 and ABIN2848885), 1:25 dilution) for 60 min at 37 °C. The secondary antibody used was Goat Anti-Rabbit IgG, DyLight® 488 Conjugated Highly Cross-Adsorbed(1583138) at 1/200 dilution for 40 min at 37 °C. Isotype control antibody (blue line) was rabbit IgG1 (1 µg/1x10<sup>6</sup> cells) used under the same conditions. Acquisition of >10,000 events was performed.



### Western Blotting

**Image 2.** All lanes : Anti-LOXL4 Antibody (Center) at 1:2000 dilution Lane 1: Human testis lysate Lane 2: Hela whole cell lysate Lysates/proteins at 20 µg per lane. Secondary Goat Anti-Rabbit IgG, (H+L), Peroxidase conjugated at 1/10000 dilution. Predicted band size : 84 kDa Blocking/Dilution buffer: 5 % NFDM/TBST.



### Western Blotting

**Image 3.** LOXL4 Antibody (C-term) (ABIN1537480 and ABIN2848885) western blot analysis in mouse liver tissue lysates (35 µg/lane). This demonstrates the LOXL4 antibody detected the LOXL4 protein (arrow).