



[Go to Product page](#)

Datasheet for ABIN1537481
anti-LETM1 antibody (C-Term)

1 Image

Overview

Quantity:	400 µL
Target:	LETM1
Binding Specificity:	AA 577-607, C-Term
Reactivity:	Human
Host:	Rabbit
Clonality:	Polyclonal
Conjugate:	This LETM1 antibody is un-conjugated
Application:	Western Blotting (WB)

Product Details

Immunogen:	This LETM1 antibody is generated from rabbits immunized with a KLH conjugated synthetic peptide between 577-607 amino acids from the C-terminal region of human LETM1.
Clone:	RB37176
Isotype:	Ig Fraction
Purification:	This antibody is purified through a protein A column, followed by peptide affinity purification.

Target Details

Target:	LETM1
Alternative Name:	LETM1 (LETM1 Products)
Background:	This gene encodes a protein that is localized to the inner mitochondrial membrane. The protein

Target Details

functions to maintain the mitochondrial tubular shapes and is required for normal mitochondrial morphology and cellular viability. Mutations in this gene cause Wolf-Hirschhorn syndrome, a complex malformation syndrome caused by the deletion of parts of the distal short arm of chromosome 4. Related pseudogenes have been identified on chromosomes 8, 15 and 19.

Molecular Weight: 83354

Gene ID: 3954

NCBI Accession: [NP_036450](#)

UniProt: [O95202](#)

Application Details

Application Notes: WB: 1:1000

Restrictions: For Research Use only

Handling

Format: Liquid

Buffer: Purified polyclonal antibody supplied in PBS with 0.09 % (W/V) sodium azide.

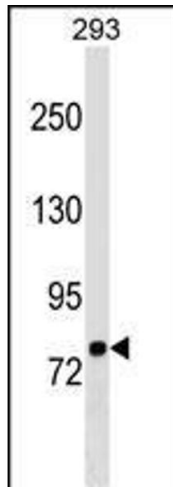
Preservative: Sodium azide

Precaution of Use: This product contains Sodium azide: a POISONOUS AND HAZARDOUS SUBSTANCE which should be handled by trained staff only.

Storage: 4 °C,-20 °C

Storage Comment: LETM1 Antibody (C-term) can be refrigerated at 2-8 °C for up to 6 months. For long term storage, keep at -20 °C.

Expiry Date: 6 months



Western Blotting

Image 1. LETM1 Antibody (C-term) (ABIN1537481 and ABIN2849059) western blot analysis in 293 cell line lysates (35 µg/lane). This demonstrates the LETM1 antibody detected the LETM1 protein (arrow).