

Datasheet for ABIN1537483
anti-ITFG1 antibody (C-Term)[Go to Product page](#)

1 Image

Overview

Quantity:	400 µL
Target:	ITFG1
Binding Specificity:	AA 579-606, C-Term
Reactivity:	Human
Host:	Rabbit
Clonality:	Polyclonal
Conjugate:	This ITFG1 antibody is un-conjugated
Application:	Western Blotting (WB)

Product Details

Immunogen:	This ITFG1 antibody is generated from rabbits immunized with a KLH conjugated synthetic peptide between 579-606 amino acids from the C-terminal region of human ITFG1.
Clone:	RB37933
Isotype:	Ig Fraction
Predicted Reactivity:	Pr, M, Rat
Purification:	This antibody is purified through a protein A column, followed by peptide affinity purification.

Target Details

Target:	ITFG1
Alternative Name:	ITFG1 (ITFG1 Products)

Target Details

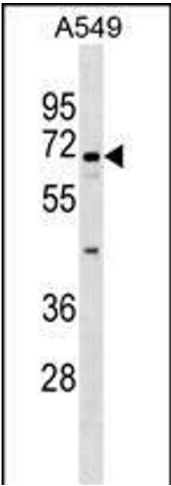
Background:	Modulator of T-cell function. ITFG1 has a protective effect in graft versus host disease model (By similarity).
Molecular Weight:	68108
Gene ID:	81533
NCBI Accession:	NP_110417
UniProt:	Q8TB96

Application Details

Application Notes:	WB: 1:1000
Restrictions:	For Research Use only

Handling

Format:	Liquid
Buffer:	Purified polyclonal antibody supplied in PBS with 0.09 % (W/V) sodium azide.
Preservative:	Sodium azide
Precaution of Use:	This product contains Sodium azide: a POISONOUS AND HAZARDOUS SUBSTANCE which should be handled by trained staff only.
Storage:	4 °C,-20 °C
Storage Comment:	ITFG1 Antibody (C-term) can be refrigerated at 2-8 °C for up to 6 months. For long term storage, keep at -20 °C.
Expiry Date:	6 months



Western Blotting

Image 1. ITFG1 Antibody (C-term) (ABIN1537483 and ABIN2849305) western blot analysis in A549 cell line lysates (35 µg/lane). This demonstrates the ITFG1 antibody detected the ITFG1 protein (arrow).