



[Go to Product page](#)

Datasheet for ABIN1537490  
**anti-DMP1 antibody (C-Term)**

1 Image

Overview

Quantity:	400 µL
Target:	DMP1 (DMTF1)
Binding Specificity:	AA 588-616, C-Term
Reactivity:	Human
Host:	Rabbit
Clonality:	Polyclonal
Conjugate:	This DMP1 antibody is un-conjugated
Application:	Western Blotting (WB)

Product Details

Immunogen:	This DMTF1 antibody is generated from rabbits immunized with a KLH conjugated synthetic peptide between 588-616 amino acids from the C-terminal region of human DMTF1.
Clone:	RB37072
Isotype:	Ig Fraction
Predicted Reactivity:	M, Rat
Purification:	This antibody is purified through a protein A column, followed by peptide affinity purification.

Target Details

Target:	DMP1 (DMTF1)
Alternative Name:	DMTF1 ( <a href="#">DMTF1 Products</a> )

## Target Details

---

**Background:** This gene encodes a transcription factor that contains a cyclin D-binding domain, three central Myb-like repeats, and two flanking acidic transactivation domains at the N- and C-termini. The encoded protein is induced by the oncogenic Ras signaling pathway and functions as a tumor suppressor by activating the transcription of ARF and thus the ARF-p53 pathway to arrest cell growth or induce apoptosis. It also activates the transcription of aminopeptidase N and may play a role in hematopoietic cell differentiation. The transcriptional activity of this protein is regulated by binding of D-cyclins. This gene is hemizygotously deleted in approximately 40 % of human non-small-cell lung cancer and is a potential prognostic and gene-therapy target for non-small-cell lung cancer. Multiple transcript variants encoding different isoforms have been found for this gene. [provided by RefSeq].

---

**Molecular Weight:** 84471

---

**Gene ID:** 9988

---

**NCBI Accession:** [NP\\_001135798](#), [NP\\_001135799](#), [NP\\_066968](#)

---

**UniProt:** [Q9Y222](#)

## Application Details

---

**Application Notes:** WB: 1:1000

---

**Restrictions:** For Research Use only

## Handling

---

**Format:** Liquid

---

**Buffer:** Purified polyclonal antibody supplied in PBS with 0.09 % (W/V) sodium azide.

---

**Preservative:** Sodium azide

---

**Precaution of Use:** This product contains Sodium azide: a POISONOUS AND HAZARDOUS SUBSTANCE which should be handled by trained staff only.

---

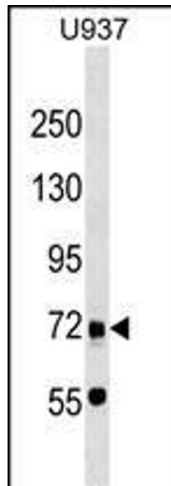
**Storage:** 4 °C, -20 °C

---

**Storage Comment:** DMTF1 Antibody (C-term) can be refrigerated at 2-8 °C for up to 6 months. For long term storage, keep at -20 °C.

---

**Expiry Date:** 6 months



#### Western Blotting

**Image 1.** DMTF1 Antibody (C-term) (ABIN1537490 and ABIN2849242) western blot analysis in cell line lysates (35 µg/lane). This demonstrates the DMTF1 antibody detected the DMTF1 protein (arrow).