

Datasheet for ABIN1537502  
**anti-ABLIM3 antibody (C-Term)**[Go to Product page](#)

## 1 Image

## Overview

Quantity:	400 µL
Target:	ABLIM3
Binding Specificity:	AA 613-641, C-Term
Reactivity:	Human
Host:	Rabbit
Clonality:	Polyclonal
Conjugate:	This ABLIM3 antibody is un-conjugated
Application:	Western Blotting (WB)

## Product Details

Immunogen:	This ABLIM3 antibody is generated from rabbits immunized with a KLH conjugated synthetic peptide between 613-641 amino acids from the C-terminal region of human ABLIM3.
Clone:	RB37108
Isotype:	Ig Fraction
Predicted Reactivity:	M
Purification:	This antibody is purified through a protein A column, followed by peptide affinity purification.

## Target Details

Target:	ABLIM3
Alternative Name:	ABLIM3 ( <a href="#">ABLIM3 Products</a> )

## Target Details

Background:	The LIM domain is a double zinc finger structure that promotes protein-protein interactions. LIM domain proteins, such as ABLIM3, play roles in embryonic development, cell lineage determination, and cancer (Krupp et al., 2006 [PubMed 16328021]).
-------------	---

Molecular Weight:	77802
-------------------	-------

Gene ID:	22885
----------	-------

NCBI Accession:	<a href="#">NP_055760</a>
-----------------	---------------------------

UniProt:	<a href="#">O94929</a>
----------	------------------------

## Application Details

Application Notes:	WB: 1:1000
--------------------	------------

Restrictions:	For Research Use only
---------------	-----------------------

## Handling

Format:	Liquid
---------	--------

Buffer:	Purified polyclonal antibody supplied in PBS with 0.09 % (W/V) sodium azide.
---------	--

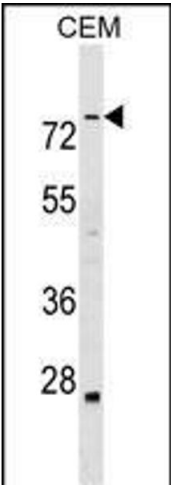
Preservative:	Sodium azide
---------------	--------------

Precaution of Use:	This product contains Sodium azide: a POISONOUS AND HAZARDOUS SUBSTANCE which should be handled by trained staff only.
--------------------	--

Storage:	4 °C, -20 °C
----------	--------------

Storage Comment:	ABLIM3 Antibody (C-term) can be refrigerated at 2-8 °C for up to 6 months. For long term storage, keep at -20 °C.
------------------	---

Expiry Date:	6 months
--------------	----------



Western Blotting

**Image 1.** ABLIM3 Antibody (C-term) (ABIN1537502 and ABIN2849050) western blot analysis in CEM cell line lysates (35 µg/lane). This demonstrates the ABLIM3 antibody detected the ABLIM3 protein (arrow).