

Datasheet for ABIN1537507  
**anti-RHOBTB1 antibody (C-Term)**[Go to Product page](#)

## 1 Image

## Overview

Quantity:	400 µL
Target:	RHOBTB1
Binding Specificity:	AA 623-650, C-Term
Reactivity:	Human
Host:	Rabbit
Clonality:	Polyclonal
Conjugate:	This RHOBTB1 antibody is un-conjugated
Application:	Western Blotting (WB)

## Product Details

Immunogen:	This RHOBTB1 antibody is generated from rabbits immunized with a KLH conjugated synthetic peptide between 623-650 amino acids from the C-terminal region of human RHOBTB1.
Clone:	RB36915
Isotype:	Ig Fraction
Predicted Reactivity:	M
Purification:	This antibody is purified through a protein A column, followed by peptide affinity purification.

## Target Details

Target:	RHOBTB1
Alternative Name:	RHOBTB1 ( <a href="#">RHOBTB1 Products</a> )

## Target Details

**Background:** The protein encoded by this gene belongs to the Rho family of the small GTPase superfamily. It contains a GTPase domain, a proline-rich region, a tandem of 2 BTB (broad complex, tramtrack, and bric-a-brac) domains, and a conserved C-terminal region. The protein plays a role in small GTPase-mediated signal transduction and the organization of the actin filament system. Alternate splicing results in multiple transcript variants. [provided by RefSeq].

**Molecular Weight:** 79417

**Gene ID:** 9886

**NCBI Accession:** [NP\\_001229288](#), [NP\\_055651](#)

**UniProt:** [O94844](#)

## Application Details

**Application Notes:** WB: 1:1000

**Restrictions:** For Research Use only

## Handling

**Format:** Liquid

**Buffer:** Purified polyclonal antibody supplied in PBS with 0.09 % (W/V) sodium azide.

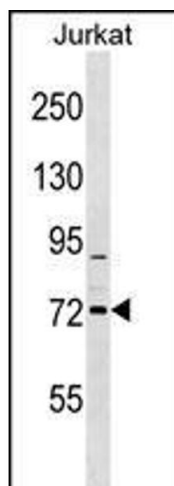
**Preservative:** Sodium azide

**Precaution of Use:** This product contains Sodium azide: a POISONOUS AND HAZARDOUS SUBSTANCE which should be handled by trained staff only.

**Storage:** 4 °C,-20 °C

**Storage Comment:** RHOBTB1 Antibody (C-term) can be refrigerated at 2-8 °C for up to 6 months. For long term storage, keep at -20 °C.

**Expiry Date:** 6 months



#### Western Blotting

**Image 1.** RHOBTB1 Antibody (C-term) (ABIN1537507 and ABIN2848711) western blot analysis in Jurkat cell line lysates (35 µg/lane). This demonstrates the RHOBTB1 antibody detected the RHOBTB1 protein (arrow).