

Datasheet for ABIN1537509
anti-MFI2 antibody (C-Term)[Go to Product page](#)

1 Image

Overview

Quantity:	400 µL
Target:	MFI2
Binding Specificity:	AA 627-655, C-Term
Reactivity:	Human
Host:	Rabbit
Clonality:	Polyclonal
Conjugate:	This MFI2 antibody is un-conjugated
Application:	Western Blotting (WB)

Product Details

Immunogen:	This MFI2 antibody is generated from rabbits immunized with a KLH conjugated synthetic peptide between 627-655 amino acids from the C-terminal region of human MFI2.
Clone:	RB39494
Isotype:	Ig Fraction
Predicted Reactivity:	M, Rb
Purification:	This antibody is purified through a protein A column, followed by peptide affinity purification.

Target Details

Target:	MFI2
Alternative Name:	MFI2 (MFI2 Products)

Target Details

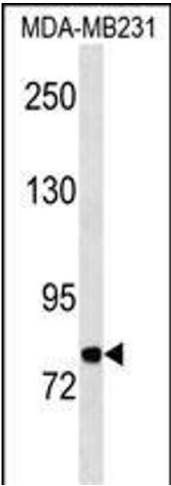
Background:	The protein encoded by this gene is a cell-surface glycoprotein found on melanoma cells. The protein shares sequence similarity and iron-binding properties with members of the transferrin superfamily. The importance of the iron binding function has not yet been identified. This gene resides in the same region of chromosome 3 as members of the transferrin superfamily. Alternative splicing results in two transcript variants. [provided by RefSeq].
Molecular Weight:	80215
Gene ID:	4241
NCBI Accession:	NP_005920 , NP_201573
UniProt:	P08582
Pathways:	Transition Metal Ion Homeostasis , Cell-Cell Junction Organization

Application Details

Application Notes:	WB: 1:1000
Restrictions:	For Research Use only

Handling

Format:	Liquid
Buffer:	Purified polyclonal antibody supplied in PBS with 0.09 % (W/V) sodium azide.
Preservative:	Sodium azide
Precaution of Use:	This product contains Sodium azide: a POISONOUS AND HAZARDOUS SUBSTANCE which should be handled by trained staff only.
Storage:	4 °C, -20 °C
Storage Comment:	MFI2 Antibody (C-term) can be refrigerated at 2-8 °C for up to 6 months. For long term storage, keep at -20 °C.
Expiry Date:	6 months



Western Blotting

Image 1. MFI2 Antibody (C-term) (ABIN1537509 and ABIN2850390) western blot analysis in MDA-M cell line lysates (35 µg/lane). This demonstrates the MFI2 antibody detected the MFI2 protein (arrow).