

Datasheet for ABIN1537517  
**anti-CUX1 antibody (C-Term)**



[Go to Product page](#)

1 Image

## Overview

Quantity:	400 µL
Target:	CUX1
Binding Specificity:	AA 640-666, C-Term
Reactivity:	Human
Host:	Rabbit
Clonality:	Polyclonal
Conjugate:	This CUX1 antibody is un-conjugated
Application:	Western Blotting (WB)

## Product Details

Immunogen:	This CUX1 antibody is generated from rabbits immunized with a KLH conjugated synthetic peptide between 640-666 amino acids from the C-terminal region of human CUX1.
Clone:	RB38744
Isotype:	Ig Fraction
Predicted Reactivity:	M
Purification:	This antibody is purified through a protein A column, followed by peptide affinity purification.

## Target Details

Target:	CUX1
Alternative Name:	CUX1 ( <a href="#">CUX1 Products</a> )

### Target Details

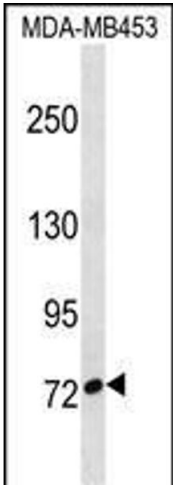
Background:	The protein encoded by this gene is a member of the homeodomain family of DNA binding proteins. It may regulate gene expression, morphogenesis, and differentiation and it may also play a role in the cell cycle progression. Several alternatively spliced transcript variants of this gene have been described, but the full-length nature of some of these variants has not been determined.
Molecular Weight:	77455
Gene ID:	1523
NCBI Accession:	<a href="#">NP_001189473</a> , <a href="#">NP_001189474</a> , <a href="#">NP_001189475</a> , <a href="#">NP_001904</a> , <a href="#">NP_852477</a>
UniProt:	<a href="#">Q13948</a>
Pathways:	<a href="#">Cellular Glucan Metabolic Process</a>

### Application Details

Application Notes:	WB: 1:1000
Restrictions:	For Research Use only

### Handling

Format:	Liquid
Buffer:	Purified polyclonal antibody supplied in PBS with 0.09 % (W/V) sodium azide.
Preservative:	Sodium azide
Precaution of Use:	This product contains Sodium azide: a POISONOUS AND HAZARDOUS SUBSTANCE which should be handled by trained staff only.
Storage:	4 °C,-20 °C
Storage Comment:	CUX1 Antibody (C-term) can be refrigerated at 2-8 °C for up to 6 months. For long term storage, keep at -20 °C.
Expiry Date:	6 months



Western Blotting

**Image 1.** CUX1 Antibody (C-term) (ABIN1537517 and ABIN2850213) western blot analysis in MDA-M cell line lysates (35 µg/lane). This demonstrates the CUX1 antibody detected the CUX1 protein (arrow).