

Datasheet for ABIN1537526

anti-Sec23 Homolog B antibody (C-Term)[Go to Product page](#)**1** Image

Overview

Quantity:	400 µL
Target:	Sec23 Homolog B (SEC23B)
Binding Specificity:	AA 655-684, C-Term
Reactivity:	Human
Host:	Rabbit
Clonality:	Polyclonal
Conjugate:	This Sec23 Homolog B antibody is un-conjugated
Application:	Western Blotting (WB)

Product Details

Immunogen:	This SEC23B antibody is generated from rabbits immunized with a KLH conjugated synthetic peptide between 655-684 amino acids from the C-terminal region of human SEC23B.
Clone:	RB37366
Isotype:	Ig Fraction
Predicted Reactivity:	B, M
Purification:	This antibody is purified through a protein A column, followed by peptide affinity purification.

Target Details

Target:	Sec23 Homolog B (SEC23B)
Alternative Name:	SEC23B (SEC23B Products)

Target Details

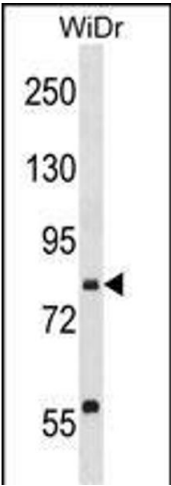
Background:	The protein encoded by this gene is a member of the SEC23 subfamily of the SEC23/SEC24 family, which is involved in vesicle trafficking. The encoded protein has similarity to yeast Sec23p component of COPII. COPII is the coat protein complex responsible for vesicle budding from the ER. The function of this gene product has been implicated in cargo selection and concentration. Multiple alternatively spliced transcript variants have been identified in this gene.
Molecular Weight:	86479
Gene ID:	10483
NCBI Accession:	NP_001166216 , NP_001166217 , NP_006354 , NP_116780 , NP_116781
UniProt:	Q15437

Application Details

Application Notes:	WB: 1:1000
Restrictions:	For Research Use only

Handling

Format:	Liquid
Buffer:	Purified polyclonal antibody supplied in PBS with 0.09 % (W/V) sodium azide.
Preservative:	Sodium azide
Precaution of Use:	This product contains Sodium azide: a POISONOUS AND HAZARDOUS SUBSTANCE which should be handled by trained staff only.
Storage:	4 °C,-20 °C
Storage Comment:	SEC23B Antibody (C-term) can be refrigerated at 2-8 °C for up to 6 months. For long term storage, keep at -20 °C.
Expiry Date:	6 months



Western Blotting

Image 1. SEC23B Antibody (C-term) (ABIN1537526 and ABIN2850107) western blot analysis in WiDr cell line lysates (35 µg/lane). This demonstrates the SEC23B antibody detected the SEC23B protein (arrow).