

Datasheet for ABIN1537540
anti-PRICKLE1 antibody (C-Term)[Go to Product page](#)

1 Image

Overview

Quantity:	400 µL
Target:	PRICKLE1
Binding Specificity:	AA 678-704, C-Term
Reactivity:	Human
Host:	Rabbit
Clonality:	Polyclonal
Conjugate:	This PRICKLE1 antibody is un-conjugated
Application:	Western Blotting (WB)

Product Details

Immunogen:	This PRICKLE1 antibody is generated from rabbits immunized with a KLH conjugated synthetic peptide between 678-704 amino acids from the C-terminal region of human PRICKLE1.
Clone:	RB39636
Isotype:	Ig Fraction
Purification:	This antibody is purified through a protein A column, followed by peptide affinity purification.

Target Details

Target:	PRICKLE1
Alternative Name:	PRICKLE1 (PRICKLE1 Products)
Background:	This gene encodes a nuclear receptor that may be a negative regulator of the Wnt/beta-catenin

Target Details

signaling pathway. The encoded protein localizes to the nuclear membrane and has been implicated in the nuclear trafficking of the transcription repressors REST/NRSF and REST4. Mutations in this gene have been linked to progressive myoclonus epilepsy. Alternate splicing results in multiple transcript variants. A pseudogene of this gene is found on chromosome 3.

Molecular Weight: 94300

Gene ID: 144165

NCBI Accession: [NP_001138353](#), [NP_001138354](#), [NP_001138355](#), [NP_694571](#)

UniProt: [Q96MT3](#)

Pathways: [WNT Signaling](#), [Regulation of Muscle Cell Differentiation](#), [Tube Formation](#), [Skeletal Muscle Fiber Development](#), [Protein targeting to Nucleus](#)

Application Details

Application Notes: WB: 1:1000

Restrictions: For Research Use only

Handling

Format: Liquid

Buffer: Purified polyclonal antibody supplied in PBS with 0.09 % (W/V) sodium azide.

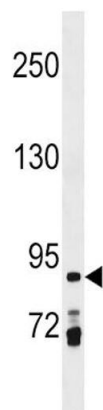
Preservative: Sodium azide

Precaution of Use: This product contains Sodium azide: a POISONOUS AND HAZARDOUS SUBSTANCE which should be handled by trained staff only.

Storage: 4 °C, -20 °C

Storage Comment: PRICKLE1 Antibody (C-term) can be refrigerated at 2-8 °C for up to 6 months. For long term storage, keep at -20 °C.

Expiry Date: 6 months



Western Blotting

Image 1. PRICKLE1 Antibody (C-term) (ABIN1537540 and ABIN2850285) western blot analysis in MDA-M cell line lysates (35 µg/lane). This demonstrates the PRICKLE1 antibody detected the PRICKLE1 protein (arrow).