



[Go to Product page](#)

Datasheet for ABIN1537554
anti-RXFP2 antibody (C-Term)

1 Image

Overview

Quantity:	400 µL
Target:	RXFP2
Binding Specificity:	AA 692-721, C-Term
Reactivity:	Human
Host:	Rabbit
Clonality:	Polyclonal
Conjugate:	This RXFP2 antibody is un-conjugated
Application:	Western Blotting (WB)

Product Details

Immunogen:	This RXFP2 antibody is generated from rabbits immunized with a KLH conjugated synthetic peptide between 692-721 amino acids from the C-terminal region of human RXFP2.
Clone:	RB39323
Isotype:	Ig Fraction
Purification:	This antibody is purified through a protein A column, followed by peptide affinity purification.

Target Details

Target:	RXFP2
Alternative Name:	RXFP2 (RXFP2 Products)
Background:	This gene encodes a member of the GPCR (G protein-coupled, 7-transmembrane receptor)

Target Details

family. Mutations in this gene are associated with cryptorchidism. Alternatively spliced transcript variants encoding different isoforms have been found for this gene.

Molecular Weight: 86453

Gene ID: 122042

NCBI Accession: [NP_001159530, NP_570718](#)

UniProt: [Q8WXD0](#)

Pathways: [cAMP Metabolic Process, Myometrial Relaxation and Contraction](#)

Application Details

Application Notes: WB: 1:1000

Restrictions: For Research Use only

Handling

Format: Liquid

Buffer: Purified polyclonal antibody supplied in PBS with 0.09 % (W/V) sodium azide.

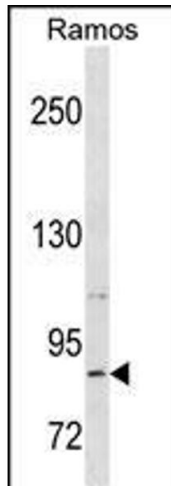
Preservative: Sodium azide

Precaution of Use: This product contains Sodium azide: a POISONOUS AND HAZARDOUS SUBSTANCE which should be handled by trained staff only.

Storage: 4 °C, -20 °C

Storage Comment: RXFP2 Antibody (C-term) can be refrigerated at 2-8 °C for up to 6 months. For long term storage, keep at -20 °C.

Expiry Date: 6 months



Western Blotting

Image 1. RXFP2 Antibody (C-term) (ABIN1537554 and ABIN2850376) western blot analysis in Ramos cell line lysates (35 µg/lane). This demonstrates the RXFP2 antibody detected the RXFP2 protein (arrow).