



[Go to Product page](#)

Datasheet for ABIN1537577  
**anti-RPL36A antibody (C-Term)**

1 Image

Overview

Quantity:	400 µL
Target:	RPL36A
Binding Specificity:	AA 74-102, C-Term
Reactivity:	Human
Host:	Rabbit
Clonality:	Polyclonal
Conjugate:	This RPL36A antibody is un-conjugated
Application:	Western Blotting (WB)

Product Details

Immunogen:	This RPL36A antibody is generated from rabbits immunized with a KLH conjugated synthetic peptide between 74-102 amino acids from the C-terminal region of human RPL36A.
Clone:	RB39197
Isotype:	Ig Fraction
Predicted Reactivity:	B, Zf, M, Pig, Rat
Purification:	This antibody is purified through a protein A column, followed by peptide affinity purification.

Target Details

Target:	RPL36A
Alternative Name:	RPL36A ( <a href="#">RPL36A Products</a> )

## Target Details

---

**Background:** Cytoplasmic ribosomes, organelles that catalyze protein synthesis, consist of a small 40S subunit and a large 60S subunit. Together these subunits are composed of 4 RNA species and approximately 80 structurally distinct proteins. This gene encodes a ribosomal protein that is a component of the 60S subunit. The protein, which shares sequence similarity with yeast ribosomal protein L44, belongs to the L44E (L36AE) family of ribosomal proteins. Although this gene has been referred to as ribosomal protein L44 (RPL44), its official name is ribosomal protein L36a (RPL36A). This gene and the human gene officially named ribosomal protein L36a-like (RPL36AL) encode nearly identical proteins, however, they are distinct genes. As is typical for genes encoding ribosomal proteins, there are multiple processed pseudogenes of this gene dispersed through the genome.

---

**Molecular Weight:** 12441

---

**Gene ID:** 6173

---

**NCBI Accession:** [NP\\_066357](#)

---

**UniProt:** [P83881](#)

## Application Details

---

**Application Notes:** WB: 1:1000

**Restrictions:** For Research Use only

## Handling

---

**Format:** Liquid

**Buffer:** Purified polyclonal antibody supplied in PBS with 0.09 % (W/V) sodium azide.

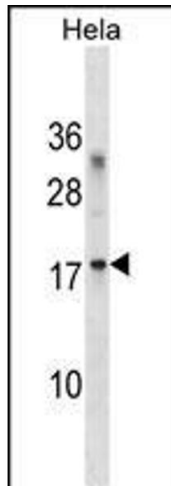
**Preservative:** Sodium azide

**Precaution of Use:** This product contains Sodium azide: a POISONOUS AND HAZARDOUS SUBSTANCE which should be handled by trained staff only.

**Storage:** 4 °C, -20 °C

**Storage Comment:** RPL36A Antibody (C-term) can be refrigerated at 2-8 °C for up to 6 months. For long term storage, keep at -20 °C.

**Expiry Date:** 6 months



### Western Blotting

**Image 1.** RPL36A Antibody (C-term) (ABIN1537577 and ABIN2850358) western blot analysis in HeLa cell line lysates (35 µg/lane). This demonstrates the RPL36A antibody detected the RPL36A protein (arrow).