

Datasheet for ABIN1537581
anti-ARHGEF33 antibody (C-Term)[Go to Product page](#)

1 Image

Overview

Quantity:	400 µL
Target:	ARHGEF33
Binding Specificity:	AA 753-780, C-Term
Reactivity:	Human
Host:	Rabbit
Clonality:	Polyclonal
Conjugate:	This ARHGEF33 antibody is un-conjugated
Application:	Western Blotting (WB)

Product Details

Immunogen:	This ARHGEF33 antibody is generated from rabbits immunized with a KLH conjugated synthetic peptide between 753-780 amino acids from the C-terminal region of human ARHGEF33.
Clone:	RB38690
Isotype:	Ig Fraction
Purification:	This antibody is purified through a protein A column, followed by peptide affinity purification.

Target Details

Target:	ARHGEF33
Alternative Name:	ARHGEF33 (ARHGEF33 Products)

Target Details

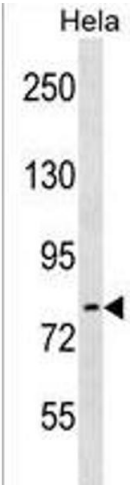
Background:	ARHGEF33 may act as a guanine-nucleotide releasing factor (By similarity).
Molecular Weight:	94633
Gene ID:	100271715
NCBI Accession:	NP_001138923
UniProt:	A8MVX0

Application Details

Application Notes:	WB: 1:1000
Restrictions:	For Research Use only

Handling

Format:	Liquid
Buffer:	Purified polyclonal antibody supplied in PBS with 0.09 % (W/V) sodium azide.
Preservative:	Sodium azide
Precaution of Use:	This product contains Sodium azide: a POISONOUS AND HAZARDOUS SUBSTANCE which should be handled by trained staff only.
Storage:	4 °C,-20 °C
Storage Comment:	ARHGEF33 Antibody (C-term) can be refrigerated at 2-8 °C for up to 6 months. For long term storage, keep at -20 °C.
Expiry Date:	6 months



Western Blotting

Image 1. ARHGEF33 Antibody (C-term) (ABIN1537581 and ABIN2838277) western blot analysis in HeLa cell line lysates (35 µg/lane). This demonstrates the ARHGEF33 antibody detected the ARHGEF33 protein (arrow).