

Datasheet for ABIN1537593
anti-PHF16 antibody (C-Term)[Go to Product page](#)

2 Images

Overview

Quantity:	400 µL
Target:	PHF16
Binding Specificity:	AA 779-806, C-Term
Reactivity:	Human
Host:	Rabbit
Clonality:	Polyclonal
Conjugate:	This PHF16 antibody is un-conjugated
Application:	Western Blotting (WB), Immunohistochemistry (Paraffin-embedded Sections) (IHC (p))

Product Details

Immunogen:	This PHF16 antibody is generated from rabbits immunized with a KLH conjugated synthetic peptide between 779-806 amino acids from the C-terminal region of human PHF16.
Clone:	RB36522
Isotype:	Ig Fraction
Purification:	This antibody is purified through a protein A column, followed by peptide affinity purification.

Target Details

Target:	PHF16
Alternative Name:	PHF16 (PHF16 Products)
Background:	This gene is part of a gene cluster on chromosome Xp11.23. The encoded protein contains a

Target Details

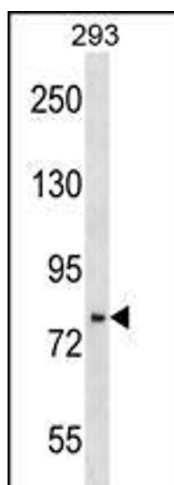
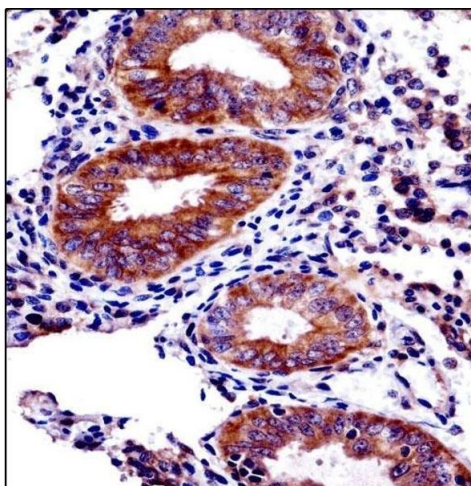
	zinc finger motif often found in transcriptional regulators, however, its exact function is not known. Alternative splicing results in multiple transcript variants encoding the same protein.
Molecular Weight:	93808
Gene ID:	9767
NCBI Accession:	NP_001070913 , NP_055550
UniProt:	Q92613

Application Details

Application Notes:	WB: 1:1000. IHC-P: 1:10~50
Restrictions:	For Research Use only

Handling

Format:	Liquid
Buffer:	Purified polyclonal antibody supplied in PBS with 0.09 % (W/V) sodium azide.
Preservative:	Sodium azide
Precaution of Use:	This product contains Sodium azide: a POISONOUS AND HAZARDOUS SUBSTANCE which should be handled by trained staff only.
Storage:	4 °C,-20 °C
Storage Comment:	PHF16 Antibody (C-term) can be refrigerated at 2-8 °C for up to 6 months. For long term storage, keep at -20 °C.
Expiry Date:	6 months



Immunohistochemistry (Paraffin-embedded Sections)

Image 1. PHF16 Antibody (C-term) ((ABIN1537593 and ABIN2848809))immunohistochemistry analysis in formalin fixed and paraffin embedded human uterus tissue followed by peroxidase conjugation of the secondary antibody and DAB staining.This data demonstrates the use of PHF16 Antibody (C-term) for immunohistochemistry. Clinical relevance has not been evaluated.

Western Blotting

Image 2. PHF16 Antibody (C-term) (ABIN1537593 and ABIN2848809) western blot analysis in 293 cell line lysates (35 µg/lane).This demonstrates the PHF16 antibody detected the PHF16 protein (arrow).