



[Go to Product page](#)

Datasheet for ABIN1537600
anti-ANKRD20A3 antibody (C-Term)

1 Image

Overview

Quantity:	400 µL
Target:	ANKRD20A3
Binding Specificity:	AA 794-821, C-Term
Reactivity:	Human
Host:	Rabbit
Clonality:	Polyclonal
Conjugate:	This ANKRD20A3 antibody is un-conjugated
Application:	Western Blotting (WB)

Product Details

Immunogen:	This ANKRD20A3 antibody is generated from rabbits immunized with a KLH conjugated synthetic peptide between 794-821 amino acids from the C-terminal region of human ANKRD20A3.
Clone:	RB38679
Isotype:	Ig Fraction
Purification:	This antibody is purified through a protein A column, followed by peptide affinity purification.

Target Details

Target:	ANKRD20A3
Alternative Name:	ANKRD20A3 (ANKRD20A3 Products)

Target Details

Background: The function of this protein remains unknown.

Molecular Weight: 94108

Gene ID: 441425

NCBI Accession: [NP_001012419](#)

UniProt: [Q5VUR7](#)

Application Details

Application Notes: WB: 1:1000

Restrictions: For Research Use only

Handling

Format: Liquid

Buffer: Purified polyclonal antibody supplied in PBS with 0.09 % (W/V) sodium azide.

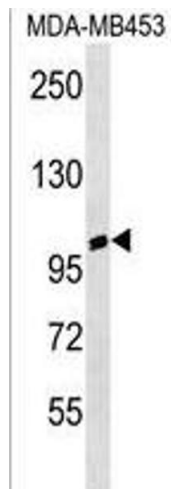
Preservative: Sodium azide

Precaution of Use: This product contains Sodium azide: a POISONOUS AND HAZARDOUS SUBSTANCE which should be handled by trained staff only.

Storage: 4 °C, -20 °C

Storage Comment: ANKRD20A3 Antibody (C-term) can be refrigerated at 2-8 °C for up to 6 months. For long term storage, keep at -20 °C.

Expiry Date: 6 months



Western Blotting

Image 1. ANKRD20A3 Antibody (C-term) (ABIN1537600 and ABIN2850333) western blot analysis in MDA-M cell line lysates (35 µg/lane). This demonstrates the ANKRD20A3 antibody detected the ANKRD20A3 protein (arrow).