



[Go to Product page](#)

Datasheet for ABIN1537609

## anti-PMS2L5 antibody (C-Term)

### 1 Image

#### Overview

Quantity:	400 µL
Target:	PMS2L5 (PMS2P5)
Binding Specificity:	AA 82-107, C-Term
Reactivity:	Human
Host:	Rabbit
Clonality:	Polyclonal
Conjugate:	This PMS2L5 antibody is un-conjugated
Application:	Western Blotting (WB)

#### Product Details

Immunogen:	This PMS2L5 antibody is generated from rabbits immunized with a KLH conjugated synthetic peptide between 82-107 amino acids from the C-terminal region of human PMS2L5.
Clone:	RB39625
Isotype:	Ig Fraction
Purification:	This antibody is purified through a protein A column, followed by peptide affinity purification.

#### Target Details

Target:	PMS2L5 (PMS2P5)
Alternative Name:	PMS2L5 ( <a href="#">PMS2P5 Products</a> )
Background:	The function of this protein remains unknown.

## Target Details

Molecular Weight: 15170

Gene ID: 5383

UniProt: [A8MQ11](#)

## Application Details

Application Notes: WB: 1:1000

Restrictions: For Research Use only

## Handling

Format: Liquid

Buffer: Purified polyclonal antibody supplied in PBS with 0.09 % (W/V) sodium azide.

Preservative: Sodium azide

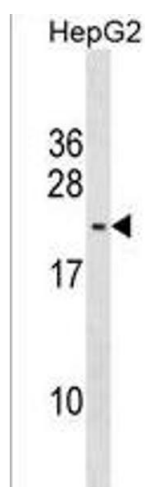
Precaution of Use: This product contains Sodium azide: a POISONOUS AND HAZARDOUS SUBSTANCE which should be handled by trained staff only.

Storage: 4 °C, -20 °C

Storage Comment: PMS2L5 Antibody (C-term) can be refrigerated at 2-8 °C for up to 6 months. For long term storage, keep at -20 °C.

Expiry Date: 6 months

## Images



### Western Blotting

**Image 1.** S2L5 Antibody (C-term) (ABIN1537609 and ABIN2850279) western blot analysis in HepG2 cell line lysates (35 µg/lane). This demonstrates the S2L5 antibody detected the S2L5 protein (arrow).