



Datasheet for ABIN1537617
anti-HKDC1 antibody (C-Term)



[Go to Product page](#)

1 Image

Overview

Quantity:	400 µL
Target:	HKDC1
Binding Specificity:	AA 825-853, C-Term
Reactivity:	Human
Host:	Rabbit
Clonality:	Polyclonal
Conjugate:	This HKDC1 antibody is un-conjugated
Application:	Western Blotting (WB)

Product Details

Immunogen:	This HKDC1 antibody is generated from rabbits immunized with a KLH conjugated synthetic peptide between 825-853 amino acids from the C-terminal region of human HKDC1.
Clone:	RB35910
Isotype:	Ig Fraction
Purification:	This antibody is purified through a protein A column, followed by peptide affinity purification.

Target Details

Target:	HKDC1
Alternative Name:	HKDC1 (HKDC1 Products)
Molecular Weight:	102545

Target Details

Gene ID: 80201

NCBI Accession: [NP_079406](#)

UniProt: [Q2TB90](#)

Application Details

Application Notes: WB: 1:1000

Restrictions: For Research Use only

Handling

Format: Liquid

Buffer: Purified polyclonal antibody supplied in PBS with 0.09 % (W/V) sodium azide.

Preservative: Sodium azide

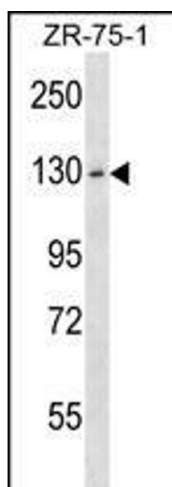
Precaution of Use: This product contains Sodium azide: a POISONOUS AND HAZARDOUS SUBSTANCE which should be handled by trained staff only.

Storage: 4 °C, -20 °C

Storage Comment: HKDC1 Antibody (C-term) can be refrigerated at 2-8 °C for up to 6 months. For long term storage, keep at -20 °C.

Expiry Date: 6 months

Images



Western Blotting

Image 1. HKDC1 Antibody (C-term) (ABIN1537617 and ABIN2848580) western blot analysis in ZR-75-1 cell line lysates (35 µg/lane). This demonstrates the HKDC1 antibody detected the HKDC1 protein (arrow).