



[Go to Product page](#)

Datasheet for ABIN1537619
anti-GUCY2F antibody (C-Term)

1 Image

Overview

Quantity:	400 µL
Target:	GUCY2F
Binding Specificity:	AA 828-856, C-Term
Reactivity:	Human
Host:	Rabbit
Clonality:	Polyclonal
Conjugate:	This GUCY2F antibody is un-conjugated
Application:	Western Blotting (WB)

Product Details

Immunogen:	This GUCY2F antibody is generated from rabbits immunized with a KLH conjugated synthetic peptide between 828-856 amino acids from the C-terminal region of human GUCY2F.
Clone:	RB36610
Isotype:	Ig Fraction
Predicted Reactivity:	B, M, Rat
Purification:	This antibody is purified through a protein A column, followed by peptide affinity purification.

Target Details

Target:	GUCY2F
Alternative Name:	GUCY2F (GUCY2F Products)

Target Details

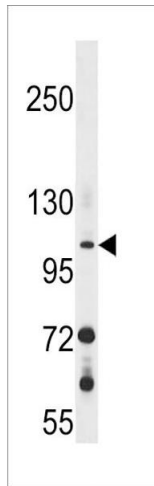
Background:	The protein encoded by this gene is a guanylyl cyclase found predominantly in photoreceptors in the retina. The encoded protein is thought to be involved in resynthesis of cGMP after light activation of the visual signal transduction cascade, allowing a return to the dark state. This protein is a single-pass type I membrane protein. Defects in this gene may be a cause of X-linked retinitis pigmentosa.
Molecular Weight:	124850
Gene ID:	2986
NCBI Accession:	NP_001513
UniProt:	P51841
Pathways:	Regulation of G-Protein Coupled Receptor Protein Signaling, Phototransduction

Application Details

Application Notes:	WB: 1:1000
Restrictions:	For Research Use only

Handling

Format:	Liquid
Buffer:	Purified polyclonal antibody supplied in PBS with 0.09 % (W/V) sodium azide.
Preservative:	Sodium azide
Precaution of Use:	This product contains Sodium azide: a POISONOUS AND HAZARDOUS SUBSTANCE which should be handled by trained staff only.
Storage:	4 °C, -20 °C
Storage Comment:	GUCY2F Antibody (C-term) can be refrigerated at 2-8 °C for up to 6 months. For long term storage, keep at -20 °C.
Expiry Date:	6 months



Western Blotting

Image 1. GUCY2F Antibody (C-term) (ABIN1537619 and ABIN2848622) western blot analysis in 293 cell line lysates (35 µg/lane). This demonstrates the GUCY2F antibody detected the GUCY2F protein (arrow).